



# THE BEST FIT FOR YOUR FLEET

## **CURTAINSIDER SERIES**





# DESIGNED IN DETAIL FOR **OPERATIONAL EFFICIENCY & MAXIMUM PERFORMANCE**

Kässbohrer curtainsider series have been expertly designed in detail and manufactured to highest quality to address all your specific functional needs in general and specialized cargo transportation for safer and faster operations assured with maximum robustness.

The expert design starts with the acclaimed light and robust chassis reliable under all load and road conditions, with KTL coating as standard, for high vehicle value retention.

Maximizing load capacity with 1 ton lighter chassis options, double deck options, inner height maximization, upto 40 pallet loading Kässbohrer Standard, Mega, Light and Maxima and Heavy Duty Series address all the basic functions needed in your operations. Unique in engineering and manufacturing the widest product range, Kässbohrer developed Air Cargo, Paper and Coil Curtainsider semi-trailers, designing all functional needs to the smallest detail.

Meeting all general and specific load safety certification requirements Code XL, Daimler 9,5 , Beverage Transportation, and Tire Transportation Kässbohrer Curtainsider series features patented K- Fix load security system with 236 lashing points each with 2,5 tons of load securing capacity , enabling the safe fixing of virtually all loads in all loading combination needs.

Kässbohrer Truck-Trailer Combination trailers meets the specific needs of urban transport with different pallet capacity options for truck and trailer , the pass through equipment option between truck and trailer, roof lifting option.

Featuring extensive huckepack and ferry options, Kässbohrer Curtainsider series are ready for inter-modal transport.



**X 34 UNITS PALLET**



**L 37 UNITS PALLET**



**XL 38 UNITS PALLET**



**3 AXLES XXL 40 UNITS PALLET**



**4 AXLES XXL 40 UNITS PALLET**



		MEGA	STANDARD	MAXIMA	DOUBLE DECK		LIGHT	COIL TRANSPORTER		HEAVY DUTY		HARDWOOD	AIR CARGO	PAPER
PRODUCT		K.SCS M / 90 - 12 / 27	K.SCS X+ / 90 - 12 / 27	K.SCX / 125 - 12 / 27	K.SCD M / 90 - 12 / 27	K.SCD X+ / 90 - 12 / 27	K.SCL X+ / 150 - 12 / 27	K.SCC M / 125 - 12 / 27	K.SCC X+ / 125 - 12 / 27	K.SCX HD3 / 160 - 18 / 27	K.SCX HD4 / 160 - 18 / 36	K.SCH / 125 - 12 / 27	K.SCA / 80 - 12 / 27	K.SCP / 125 - 12 / 27
TECHNICAL SPECIFICATIONS	PALLET CAPACITY	34 Units	34 Units	34 Units	67 Units	67 Units	34 Units	34 Units	34 Units	34 Units	34 Units	34 Units	34 Units	34 Units
	KING-PIN CAPACITY	12 ton	12 ton	12 - 14 - 15 ton	12 ton	12 ton	12 ton	12 ton	12 ton	18 ton	18 ton	12 ton	12 ton	12 ton
	AXLE LOAD	27.000 kg	27.000 kg	27.000 kg	27.000 kg	27.000 kg	27.000 kg	27.000 kg	27.000 kg	27.000 kg	36.000 kg	27.000 kg	24.000 kg	27.000 kg
	GROSS WEIGHT	39.000 kg	39.000 kg	39.000 kg - 42.000 kg	39.000 kg	39.000 kg	39.000 kg	39.000 kg	39.000 kg	45.000 kg	54.000 kg	39.000 kg	36.000 kg	39.000 kg
	WHEELBASE	7.700 mm	7.700 mm	7.700 mm	7.700 mm	7.700 mm	7.700 mm	7.700 mm	7.700 mm	8.130 mm	7.200 mm	7.700 mm	7.700 mm	7.700 mm
	GOOSENECK HEIGHT	90 mm	90 mm	125 mm	90 mm	90 mm	150 mm	125 mm	125 mm	160 mm	160 mm	125 mm	80 mm	125 mm
	COUPLING HEIGHT	950 mm 980 mm	1.050 mm - 1.100 mm - 1.150 mm	1.100 mm - 1.150 mm - 1.180 mm	950 mm	1.050 mm - 1.100 mm - 1.150 mm	1.100 mm	950 mm - 980 mm	1.100 mm - 1.150 mm	1.150 mm	1.150 mm	1.100 mm - 1.150 mm	950 mm	1.100 mm - 1.150 mm
	MULTIPLE 5th WHEEL	-	-	-	-	-	-	-	-	-	-	-	-	-
	INTERNAL HEIGHT (Front)	2.900 mm - 2.950 mm	2.750 mm - 2.800 mm	2.690 mm - 2.710 mm	2.900 mm - 2.920 mm - 2.950 mm	2.750 mm - 2.800 mm - 2.850 mm	2.710 mm	2.900 mm - 2.920 mm	2.720 mm - 2.750 mm	2.690 mm	2.690 mm	2.710 mm - 2.750 mm	2.930 mm	2.710 mm - 2.750 mm
	TARE WEIGHT	6.360 kg	6.610 kg	6.560 kg	7.400 kg	7.500 kg	5.630 kg	7.200 kg	7.280 kg	7.260 kg	7.810 kg	7.100 kg	7.380 kg	7.500 kg
RUNNING GEAR	CHASSIS MATERIAL	S460MC	S460MC	S460MC	S460MC	S460MC	S700MC	S460MC	S460MC	S700MC	S700MC	S460MC	S460MC	S460MC
	ANTI-CORROSION	KTL Coating	KTL Coating	KTL Coating	KTL Coating	KTL Coating	KTL Coating	KTL Coating	KTL Coating	KTL Coating	KTL Coating	KTL Coating	KTL Coating	KTL Coating
	CHASSIS TYPE	Double "I" Beam	Double "I" Beam	Double "I" Beam	Double "I" Beam	Double "I" Beam	Double "I" Beam	Double "I" Beam	Double "I" Beam	Double "I" Beam	Double "I" Beam	Double "I" Beam	Double "I" Beam	Double "I" Beam
	TIRE SIZE	445/45 R19.5	385/65 R22.5	385/65 R22.5	445/45 R19.5	385/65 R22.5	385/65 R22.5	445/45 R19.5	385/65 R22.5	385/65 R22.5	385/65 R22.5	385/65 R22.5	215/75 R17.5	385/65 R22.5
	RIM TYPE	Steel rims with offset	Steel rims with offset	Steel rims with offset	Steel rims with offset	Steel rims with offset	Aluminum rims with offset	Steel rims with offset	Steel rims with offset	Steel rims with offset	Steel rims with offset	Steel rims with offset	Steel rims with offset	Steel rims with offset
	AXLES	BPW Disc Brakes	BPW Disc Brakes	BPW Disc Brakes	BPW Disc Brakes	BPW Disc Brakes	BPW Disc Brakes	BPW Disc Brakes	BPW Disc Brakes	BPW Disc Brakes	BPW Disc Brakes	BPW Disc Brakes	BPW Disc Brakes	BPW Disc Brakes
	LANDING GEAR	Jost	Jost	Jost	Jost	Jost	Jost	Jost	Jost	Jost	Jost	Jost	Jost	Jost
	AIR TANKS	Steel	Steel	Steel	Steel	Steel	Aluminum	Steel	Steel	Steel	Steel	Steel	Steel	Steel
LOAD SECURITY	CODE XL CERTIFICATE	Available	Available	Available	Available	Available	Available	Available	Available	Available	Available	Available	Available	Available
	K-FIX	118 holes every 70 mm per side rave with 2.5 ton load capacity	118 holes every 70 mm per side rave with 2.5 ton load capacity	118 holes every 70 mm per side rave with 2.5 ton load capacity	118 holes every 70 mm per side rave with 2.5 ton load capacity	118 holes every 70 mm per side rave with 2.5 ton load capacity	118 holes every 70 mm per side rave with 2.5 ton load capacity	118 holes every 70 mm per side rave with 2.5 ton load capacity	118 holes every 70 mm per side rave with 2.5 ton load capacity	118 holes every 70 mm per side rave with 2.5 ton load capacity	118 holes every 70 mm per side rave with 2.5 ton load capacity	118 holes every 70 mm per side rave with 2.5 ton load capacity	118 holes every 70 mm per side rave with 2.5 ton load capacity	118 holes every 70 mm per side rave with 2.5 ton load capacity
	LATERAL PILLAR	3x2	3x2	3x2	5x2	5x2	3x2	3x2	3x2	3x2	3x2	3x2	3x2	3x2
	FLOOR TYPE	30 mm Plywood	30 mm Plywood	30 mm Plywood	30 mm Plywood	30 mm Plywood	28 mm Plywood	30 mm Plywood	30 mm Plywood	30 mm Plywood	30 mm Plywood	35 mm Hardwood	28 mm Plywood	30 mm Plywood
	FORKLIFT AXLE LOAD CAPACITY	7.200 kg	7.200 kg	7.200 kg	7.200 kg	7.200 kg	5.460 kg	5.460 kg	5.460 kg	7.200 kg	7.200 kg	9.500 kg	5.460 kg	9.500 kg
	FRONT PANEL	Steel	Steel	Steel	Steel	Steel	Aluminum	Steel	Steel	Steel	Steel	Steel	Steel	Steel
SPECIAL DIMENSIONS	HOUSING FOR COIL TRANSPORT	-	-	-	-	-	-	4x2 pockets in the coil well	4x2 pockets in the coil well	-	-	-	-	-
	COIL WELL LENGHT	-	-	-	-	-	-	7.250 mm	7.250 mm - 9.060 mm	-	-	-	-	-
	DOUBLE DECK BAR	-	-	-	24 Bars	24 Bars	-	-	-	-	-	-	-	-

## STANDARD VIEWS

KTL Coating	K-Fix	"L" Type Ramp Buffer	Front Panel	Rear Panel
Sliding Roof	Kick Plate	Auto Reset	Sliding Ladder	Code XL Certificate

## SMART INTEGRATION

Smart Board	Telematics	Tire Pressure Monitoring (IVTM)	Tire Inflation System (PSI)	Hubodometer
Immobilizer	Tailguard	OptiLoad / OptiTurn	Brake Pad Wear Indicator	

## BOX OPTIONS

Plastic Toolbox 600 mm	Plastic Toolbox 1.000 mm	KTL Coated Steel Picnic Box	KTL Coated Steel Toolbox	Stainless Steel Toolbox
Pallet Box for 30 units	Pallet Box for 24 units	Pallet Box for 8 units	Double Deck Storage Box	Front Wall Storage Box

## LOAD SECURING OPTIONS



Side Rows



Side Boards



Roof Lifting



Integrated Vertical Planks Side Curtain



Code XLS



Pallet Stopper



Pillar Pockets



Pillar Storage



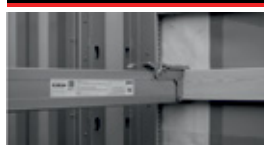
Heavy Duty Lashing Rings



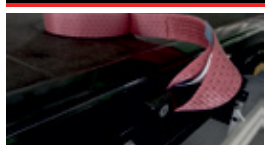
U Type Lashing Rings



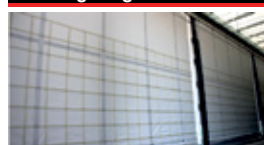
Additional Pillars (K Pillar)



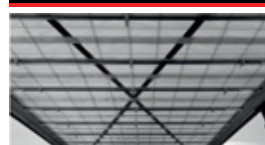
Load Stopper Bar



Fixed Spanset



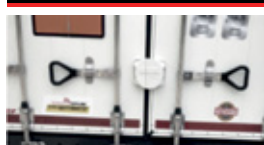
Anti-Theft Curtain



Anti-Theft Roof Curtain



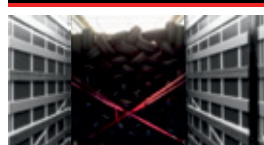
BDL Lock



Turtle Lock



Pallet Stoppers with Integrated Lashing Rings



Tire Transport Certification



Custom Clearance

## FERRY OPTIONS



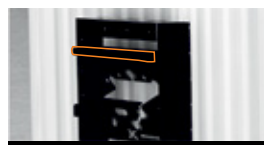
4x2 Ferry Rings



Ferry Skid



Reinforced Rear Door



Ramp Buffer on Coupling Section

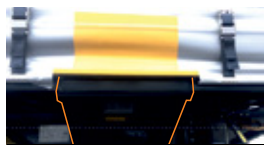


Reinforced King-Pin Area

## HUCKEPACK OPTIONS



Compatibility for Variable Tunnels and Wagons



Reinforced Crane Pockets



Special Air Suspensions



Foldable Bumper for Special Wagon Types



Curtain Buckles with Locks



Foldable Mudguard



Roof Curtain with Additional Connections

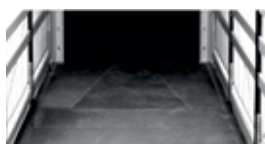


Additional Bumper Protection



Rupd-5K1 Rear Bumper

## OTHER OPTIONS



Anti-Slip King-Pin Area



Aluminum Rims



Self Steering Axle



Axle Lifting



Foldable Rear Landing Leg



Tail Lift



Roller Feet Landing Leg



Middle Pillar Extension



Rear Pillar Extension



Container Type Door





# WE KNOW YOUR KÄSSBOHRER **AND WE WANT TO TAKE CARE OF IT**

Kässbohrer develops vehicles that push the boundaries of innovation and builds them to last. As our products are attuned to the needs of our customers worldwide, so are our services.

Taking care of your needs where ever your operations are in Europe, 95% of our ever-growing competent after-sales service network is certified to serve Europe's widest product range. Kässbohrer's website is constantly updated with the latest information for your convenience.

With K-Advance Care Service Packages tailored to each customer's operational needs as well as a 24/7 Kässbohrer Hotline available in 27 countries and 23 languages, Kässbohrer's after-sales services are attuned to meet the versatile requirements.





# KÄSSBOHRER PRODUCTION WORLDWIDE

Powered by its motto “Enginuity”, Kässbohrer pushes the boundaries of vehicle engineering to meet the versatile needs of its customers worldwide. Winner of the prestigious Trailer Innovation Award, Kässbohrer vehicle quality is secured by the technological expertise of its production processes.

For now and in the future, Kässbohrer will continue developing products and services to take your business to the next level.



## Ulm Plant | Germany

In 2017, Kässbohrer returned back home with its production facility investment in Ulm. Operating in 35.000 m<sup>2</sup>, Ulm Plant serves as the main production facility for Southern Germany and the neighboring countries. Fully offering and servicing Kässbohrer's incomparably product range as the main sales and after-sales center, Ulm plant is also our spare parts warehouse.



## Goch Plant | Germany

Since 2002, Goch Factory, operating in a total area of 108.000 m<sup>2</sup> is one of two production facilities in Germany. Serving as the main production and PDI center for Northern Europe, Goch Facility serves as after-sales and sales center for Nordrhein Westfalen Region as well as our spare parts warehouse.



## Adapazari Plant | Turkey

Adapazari is Kässbohrer's biggest production plant with a total production area of 365.000 m<sup>2</sup> and has a total production capacity of 20.000 units. Adapazari plant hosts R&D and prototype test centers on the campus. Last but not least, an area of 3.500 m<sup>2</sup> enables the production and testing of more than one prototype vehicle at a time.

### Kässbohrer Sales GmbH

**Ulm** | Im Katzelwinkel 5, 88480 Achstetten, Germany | **T** +49 (0) 7392 96797-0 | **F** +49 (0) 7392 96797-67

**Goch** | Siemensstrasse 74, 47574 Germany | **T** +49 (0) 2823 9721-0 | **F** +49 (0) 2823 9721-21 | **E** [info@kaessbohrer.com](mailto:info@kaessbohrer.com) | [www.kaessbohrer.com](http://www.kaessbohrer.com)

Kässbohrer semi-trailers are manufactured according to lean production and quality principles in consideration of total cost of ownership.

Kässbohrer reserves the right to alter the product specification. Visual and technical data subject to change according to vehicle configuration. v4 Sep 2022