



PIONEERING IN HEAVY HAULAGE HYDRAULIC STEERING **LOW-BED SERIES**





THE STRONGEST LINK IN YOUR OPERATIONS

K.SLH **Hydraulic Steering Low-Bed**

Kässbohrer K.SLH series is engineered for the extreme heavy-haulage transportation delivering peak performance even at the fiercest road conditions.

K.SLH series is designed to comfortably transport all goods in the below 100 ton category by optimal weight distribution, hydraulic steering axles and hydraulically adjustable gooseneck.

The series comes in 3 up to 8 axle configurations with single or double extension options that are easily maneuverable by progressive hydraulic steering, wireless remote steering control and auto-alignment systems under the toughest road and working conditions while prolonging tyre life and performance.

K.SLL **Hydraulic Steering Low-Loader**

Kässbohrer's low-loader semi-trailer series K.SLL was engineered for the demanding requirements of heavy transportation and includes low-loaders with 2 to 3 axles, equipped with hydraulic steering and pneumatic suspension.

With a special platform height, the K.SLL series enables transportation of heavy goods with 4.000 mm total convoy height limitation. The detachable gooseneck shortens the process of loading of construction machinery and increases safety during loading.

Equipped with hydraulic steering axles, K.SLL ensures maximum maneuverability and flexibility under most difficult working conditions.



LOW-LOADER LOW-BED SERIES				
PRODUCT	K.SLL 2 / 2H - 18 / 24	K.SLL 2 / 2H - 24 / 24	K.SLL 2 / 2H - 18 / 24	K.SLL 2 / 2H - 24 / 24
TOTAL LENGTH	13.120 mm	13.120 mm	13.120 mm	13.120 mm
POOL LENGTH	6.810 mm	6.810 mm	6.810 mm (*Optional)	6.810 mm
ADD-ON PLATFORM	-	-	3.000 mm - 5.000 mm	3.000 mm - 5.000 mm
TRUCK COMPATIBILITY	4x2 / 6x2 / 6x4 / 8x4 / 8x6	4x2 / 6x2 / 6x4 / 8x4 / 8x6	4x2 / 6x2 / 6x4 / 8x4 / 8x6	4x2 / 6x2 / 6x4 / 8x4 / 8x6
POOL HEIGHT (LOADED)	300mm	300mm	300mm	350mm
GROUND CLEARANCE	100 mm	100 mm	100 mm	100 mm
BOOGIE HEIGHT (LOADED)	910 mm	910 mm	910 mm	910 mm
POOL THICKNESS	200 mm	250 mm	200 mm	250 mm
WHEELBASE	10.530 mm	10.530 mm	10.530 mm	10.530 mm
DISTANCE BETWEEN AXLES	1.360 mm	1.360 mm	1.360 mm	1.360 mm
GOOSENECK LENGTH	3.600 mm	3.600 mm	3.600 mm	3.600 mm
REAR SWING	2.100 mm (*Optional)	2.100 mm (*Optional)	2.100 mm (*Optional)	2.100 mm (*Optional)
PLATFORM EXTENSION	5.550 mm	5.550 mm	4.650 mm	4.650 mm
TOTAL WIDTH	2.540 mm	2.540 mm	2.540 mm	2.540 mm
POOL-BOGGIE CONNECTION	Welded	Welded	Pin Connection	Pin Connection
AXLES CAPACITY	24.000 kg	24.000 kg	24.000 kg	24.000 kg
KING-PIN CAPACITY	18.000 kg	24.000 kg	24.000 kg	24.000 kg
TARE WEIGHT (± 3%)	11.800 kg	12.050 kg	12.300 kg	12.500 kg
GROSS VEHICLE WEIGHT <small>(80 KM/H)</small>	42.000 kg	48.000 kg	42.000 kg	48.000 kg
CHASSIS (STEEL)	S700 MC (C)	S700 MC (C)	S700 MC (C)	S700 MC (C)
PROFILE	Double Box Profile (A)	Double Box Profile (A)	Double Box Profile (A)	Double Box Profile (A)
KING-PIN	3.5" King-pin + 2" King-pin	3.5" King-pin + 2" King-pin	3.5" King-pin + 2" King-pin	3.5" King-pin + 2" King-pin
KING-PIN POSITION	1 unit	1 unit	1 unit	1 unit
PLATFORM FLOOR	Hardwood Floor Cover (*Optional)	Hardwood Floor Cover (*Optional)	Hardwood Floor Cover (*Optional)	Hardwood Floor Cover (*Optional)

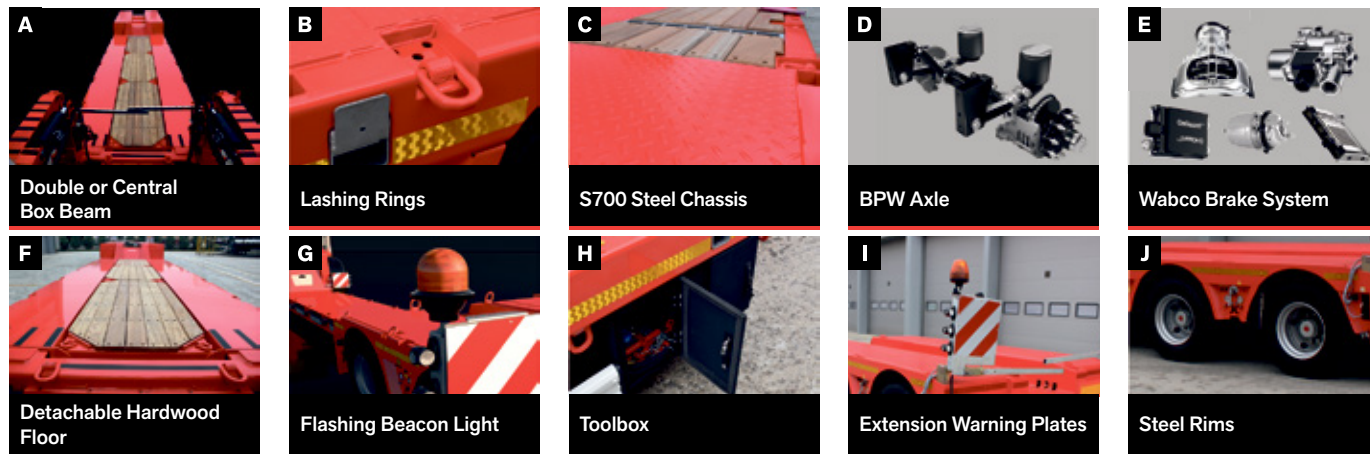
GOOSENECK TYPE	Hydraulic Adjustable and Detachable	Hydraulic Adjustable and Detachable	Hydraulic Adjustable and Detachable	Hydraulic Adjustable and Detachable
LATERAL EXTENSION BRACKETS	(2)	(2)	(2)	(2)
FLOOR COVER	30 mm hardwood + chequered steel plate (F)	30 mm hardwood + chequered steel plate (F)	30 mm hardwood + chequered steel plate (F)	30 mm hardwood + chequered steel plate (F)
LASHING RINGS	10 x 2 (13.4 t) + 7 x 2 (8t) (B)	10 x 2 (13.4 t) + 7 x 2 (8t) (B)	10 x 2 (13.4 t) + 7 x 2 (8t) (B)	10 x 2 (13.4 t) + 7 x 2 (8t) (B)
PILLAR POCKETS	6 x 2 at Pool 3 x 2 at Boogie	6 x 2 at Pool 3 x 2 at Boogie	6 x 2 at Pool 3 x 2 at Boogie	6 x 2 at Pool 3 x 2 at Boogie
GOOSENECK PANELS	Front: Aluminum 360 mm x 1.550 mm Side: Aluminum 360 mm x 1.900 mm Rear: Aluminum 360 mm x 2.480 mm (Longer Option)	Front: Aluminum 360 mm x 1.550 mm Side: Aluminum 360 mm x 1.900 mm Rear: Aluminum 360 mm x 2.480 mm (Longer Option)	Front: Aluminum 360 mm x 1.550 mm Side: Aluminum 360 mm x 1.900 mm Rear: Aluminum 360 mm x 2.480 mm (Longer Option)	Front: Aluminum 360 mm x 1.550 mm Side: Aluminum 360 mm x 1.900 mm Rear: Aluminum 360 mm x 2.480 mm (Longer Option)
RAMP TYPE	(8)	(8)	(8)	(8)
GOOSENECK LANDING RAMP	(9)	(9)	(9)	(9)
STEERING SYSTEM	1H - 2H	1H - 2H	1H - 2H	1H - 2H
STEERING CONTROL	Wired Control (*Optional)	Wired Control (*Optional)	Wired Control (*Optional)	Wired Control (*Optional)
ALIGNMENT SYSTEM	Semi-auto (*Optional)	Semi-auto (*Optional)	Semi-auto (*Optional)	Semi-auto (*Optional)
AXLE BRAND	BPW (D)	BPW (D)	BPW (D)	BPW (D)
BRAKE SYSTEM	WABCO EBS 2S/2M	WABCO EBS 2S/2M	WABCO EBS 2S/2M	WABCO EBS 2S/2M
SUSPENSION TYPE	Pneumatic	Pneumatic	Pneumatic	Pneumatic
NUMBER OF TYRES	9 tyres (*)	9 tyres (*)	9 tyres (*)	9 tyres (*)
TIRE SIZE	245/70 R 17.5	245/70 R 17.5	245/70 R 17.5	245/70 R 17.5
TIRE BRAND	Kässbohrer's Choice	Kässbohrer's Choice	Kässbohrer's Choice	Kässbohrer's Choice
RIM MATERIAL	Steel	Steel	Steel	Steel
SPARE WHEEL HOLDER	1 unit	1 unit	1 unit	1 unit
SPARE WHEEL CRANE	(10)	(10)	(10)	(10)
LUBRICATION UNIT	(18)	(18)	(18)	(18)
CONNECTION SOCKETS	NATO Socket + Battery Clamp Cable	NATO Socket + Battery Clamp Cable	NATO Socket + Battery Clamp Cable	NATO Socket + Battery Clamp Cable
REAR TAIL LIGHT TYPE	Full LED	Full LED	Full LED	Full LED
EXTENSION WARNING PLATES	4 unit 1 meter Extendable Plates	4 unit 1 meter Extendable Plates	4 unit 1 meter Extendable Plates	4 unit 1 meter Extendable Plates
FLASHING BEACON LIGHTS	1 unit LED	1 unit LED	1 unit LED	1 unit LED
TOOLBOX	Standard Hard Plastic Tollbox on Gooseneck	Standard Hard Plastic Tollbox on Gooseneck	Standard Hard Plastic Tollbox on Gooseneck	Standard Hard Plastic Tollbox on Gooseneck

K.SLL 3 / 3H - 24 / 30	K.SLL 3 / 3H - 24 / 36	K.SLL B 2 / 2H - 18 / 24	K.SLL B 2 / 2H - 18 / 24
16.175 mm	16.175 mm	13.225 mm	13.225 mm
7.900 mm	7.900 mm	6.600 mm	6.600 mm
3.000 mm - 5.000 mm	3.000 mm - 5.000 mm	-	-
4x2 / 6x2 / 6x4 / 8x4 / 8x6	4x2 / 6x2 / 6x4 / 8x4 / 8x6	4x2 / 6x2 / 6x4 / 8x4 / 8x6	4x2 / 6x2 / 6x4 / 8x4 / 8x6
325mm	325mm	400mm	400mm
100 mm	100 mm	100 mm	100 mm
900 mm	900 mm	910 mm	910 mm
225 mm	225 mm	300 mm	300 mm
12.810 mm	12.810 mm	11.975 mm	11.975 mm
1.360 mm	1.360 mm	1.360 mm	1.360 mm
4.020 mm	4.020 mm	3.825 mm	3.825 mm
2.500 mm (*Optional)	2.500 mm (*Optional)	2.100 mm	2.100 mm
5.400 mm	5.400 mm	4.550 mm	4.550 mm
2.540 mm	2.540 mm	2.540 mm	2.540 mm
Pin Connection	Pin Connection	Pin Connection	Welded
30.000 kg	36.000 kg	24.000 kg	24.000 kg
24.000 kg	24.000 kg	18.000 kg	24.000 kg
16.300 kg	16.300 kg	12.300 kg	12.300 kg
56.100 kg	60.000 kg	42.000 kg	42.000 kg
S700 MC (C)	S700 MC (C)	S700 MC (C)	S700 MC (C)
Double Box Profile (A)	Double Box Profile (A)	Double Box Profile (A)	Double Box Profile (A)
3.5" King-pin + 2" King-pin	3.5" King-pin + 2" King-pin	3.5" King-pin + 2" King-pin	3.5" King-pin + 2" King-pin
1 unit	1 unit	1 unit	1 unit
Hardwood Floor Cover (*Optional)	Hardwood Floor Cover (*Optional)	Hardwood Floor Cover (*Optional)	Hardwood Floor Cover (*Optional)
Adjustable and Hydraulic Detachable	Hydraulic Adjustable and Detachable	Hydraulic Adjustable and Detachable	Hydraulic Adjustable and Detachable
(2)	(2)	(2)	(2)
30 mm hardwood + chequered steel plate (F)	30 mm hardwood + chequered steel plate (F)	-	-
11 x 2 (13.4 t) + 8 x 2 (8t) (B)	11 x 2 (13.4 t) + 8 x 2 (8t) (B)	7 x 2 (13.4 t) + 6 x 2 (8t) (B)	7 x 2 (13.4 t) + 6 x 2 (8t) (B)
5 x 2 at Pool 4 x 2 at Boogie	5 x 2 at Pool 4 x 2 at Boogie	3 x 2 at Boogie	3 x 2 at Boogie
Front: Aluminum 360 mm x 1.550 mm Side: Aluminum 360 mm x 1.900 mm Rear: Aluminum 360 mm x 2.480 mm (Longer Option)	Front: Aluminum 360 mm x 1.550 mm Side: Aluminum 360 mm x 1.900 mm Rear: Aluminum 360 mm x 2.480 mm (Longer Option)	Front: Aluminum 360 mm x 1.550 mm Side: Aluminum 360 mm x 1.900 mm Rear: Aluminum 360 mm x 2.480 mm (Longer Option)	Front: Aluminum 360 mm x 1.550 mm Side: Aluminum 360 mm x 1.900 mm Rear: Aluminum 360 mm x 2.480 mm (Longer Option)
(8)	(8)	(8)	(8)
(9)	(9)	(9)	(9)
1H - 2H - 3H	1H - 2H - 3H	1H - 2H	1H - 2H
Wired Control (*Optional)	Wired Control (*Optional)	Wired Control (*Optional)	Wired Control (*Optional)
Semi-auto (*Optional)	Semi-auto (*Optional)	Semi-auto (*Optional)	Semi-auto (*Optional)
BPW (D)	BPW (D)	BPW (D)	BPW (D)
WABCO EBS 4S/3M	WABCO EBS 4S/3M	WABCO EBS 4S/3M	WABCO EBS 4S/3M
Pneumatic	Pneumatic	Pneumatic	Pneumatic
13 tyres (*)	13 tyres (*)	9 tyres (*)	9 tyres (*)
245/70 R 17.5	245/70 R 17.5	245/70 R 17.5	245/70 R 17.5
Kässbohrer's Choice	Kässbohrer's Choice	Kässbohrer's Choice	Kässbohrer's Choice
Steel	Steel	Steel	Steel
1 unit	1 unit	1 unit	1 unit
(10)	(10)	(10)	(10)
(18)	(18)	(18)	(18)
NATO Socket + Battery Clamp Cable	NATO Socket + Battery Clamp Cable	NATO Socket + Battery Clamp Cable	NATO Socket + Battery Clamp Cable
Full LED	Full LED	Full LED	Full LED
4 unit 1 meter Extendable Plates	4 unit 1 meter Extendable Plates	4 unit 1 meter Extendable Plates	4 unit 1 meter Extendable Plates
1 unit LED	1 unit LED	1 unit LED	1 unit LED
Standard Hard Plastic Tollbox on Gooseneck	Standard Hard Plastic Tollbox on Gooseneck	Standard Hard Plastic Tollbox on Gooseneck	Standard Hard Plastic Tollbox on Gooseneck

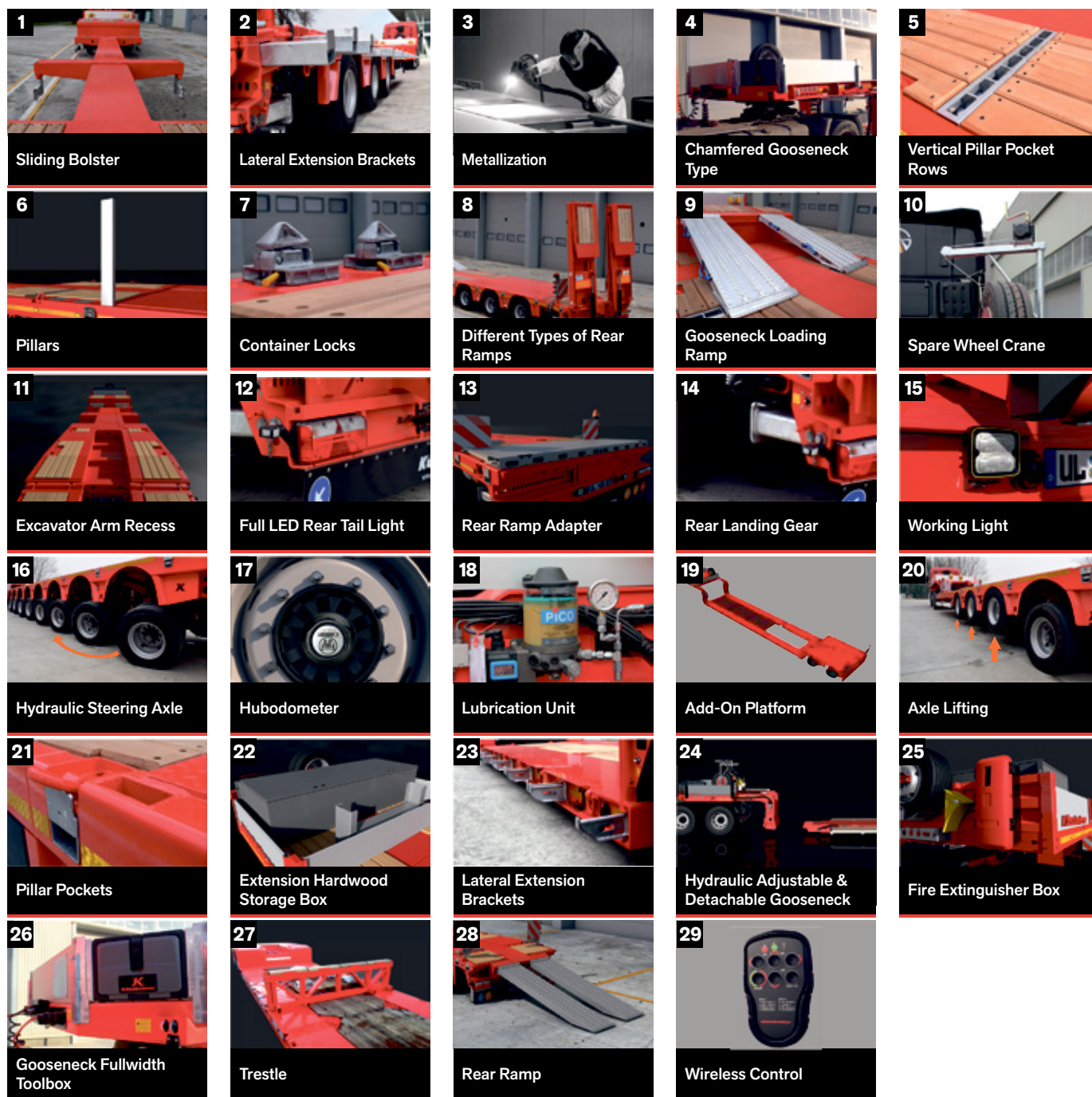
PRODUCT
TOTAL LENGTH
POOL LENGTH
POOL HEIGHT (LOADED)
WHEELBASE
DISTANCE BETWEEN AXLES
GOOSENECK LENGTH
PLATFORM EXTENSION
TOTAL WIDTH
TRUCK COMPATIBILITY
AXLES CAPACITY
KING-PIN CAPACITY
TARE WEIGHT (± 3%)
GROSS VEHICLE WEIGHT <small>(80 KM/H)</small>
CHASSIS (STEEL)
PROFILE
KING-PIN
KING-PIN POSITION
SLIDING BOLSTER
GOOSENECK TYPE
LATERAL EXTENSION BRACKETS
FLOOR COVER
LASHING RINGS
VERTICAL PILLAR POCKET ROWS
PILLAR POCKETS
PILLARS
CONTAINER LOCKS
GOOSENECK PANELS
RAMP LOADING CAPACITY
RAMP TYPE
GOOSENECK LANDING RAMP
STEERING SYSTEM
STEERING CONTROL
ALIGNMENT SYSTEM
AXLE BRAND
BRAKE SYSTEM
SUSPENSION TYPE
NUMBER OF TYRES
TIRE SIZE
TIRE BRAND
RIM MATERIAL
SPARE WHEEL HOLDER
SPARE WHEEL CRANE
LUBRICATION UNIT
CONNECTION SOCKETS
FRONT LANDING GEAR
REAR LANDING GEAR
REAR TAIL LIGHT TYPE
FLASHING BEACON LIGHTS
EXTENSION WARNING PLATES
EXTENSION HARDWOOD STORAGE BOX

K.SLH 3 / 3H - 18 / 30	K.SLH 3 / 3H - 24 / 36	K.SLH 4 / 3H - 18 / 40	K.SLH 4 / 3H - 24 / 48	K.SLH 8 - 2A / 6H - 30 / 96
13.250 mm	13.250 mm	13.250 mm	13.250 mm	18.100 mm
9.300 mm	9.300 mm	9.300 mm	9.300 mm	14.200 mm (*Optional)
875 mm	875 mm	875 mm	875 mm	968 mm
8.800 mm	8.800 mm	8.120 mm	8.800 mm	11.145 mm
1.360 mm	1.360 mm	1.360 mm	1.360 mm	1.360 mm
3.900 mm	3.900 mm	3.900 mm	3.900 mm	3.900 mm
6.200 mm	6.200 mm	6.200 mm	6.200 mm	19.500 mm
2.550 mm	2.550 mm	2.550 mm	2.550 mm	2.750 mm
TBA	TBA	TBA	TBA	TBA
10.000 kg	12.000 kg	10.000 kg	12.000 kg	12.000 kg
18.000 kg	24.000 kg	18.000 kg	24.000 kg	30.000 kg
12.150 kg	12.800 kg	13.000 kg	13.650 kg	30.500 kg
48.000 kg	60.000 kg	58.000 kg	72.000 kg	126.000 kg
S700 MC	S700 MC	S700 MC	S700 MC	S700 MC
Box Profile	Box Profile	Box Profile	Box Profile	Box Profile
2" King-pin (*)	2" King-pin (*)	2" King-pin (*)	2" King-pin (*)	2" King-pin (*)
1 unit	1 unit	1 unit	1 unit	1 unit
1 unit non-removable width: 300 mm (1)	1 unit non-removable width: 300 mm (1)	1 unit non-removable width: 300 mm (1)	1 unit non-removable width: 300 mm (1)	-
Fixed (500 x 500 chamfered)	Fixed (500 x 500 chamfered)	Fixed (500 x 500 chamfered)	Fixed (500 x 500 chamfered)	Hydraulic Movable (Standard Corners)
10 x 2 Box Profile (Standard)	10 x 2 Box Profile (Standard)	10 x 2 Box Profile (Standard)	10 x 2 Box Profile (Standard)	11 x 2 Galvanized Steel
45 mm hardwood + chequered steel plate (F)	45 mm hardwood + chequered steel plate (F)	45 mm hardwood + chequered steel plate (F)	45 mm hardwood + chequered steel plate (F)	45 mm hardwood + chequered steel plate (F)
8 x 2 (13.4 t) + 13 x 2 (8 t)	8 x 2 (13.4 t) + 13 x 2 (8 t)	7 x 2 (13.4 t) + 13 x 2 (8 t)	7 x 2 (13.4 t) + 13 x 2 (8 t)	4 x 2 (13.4 t) + 10 x 2 (10 t)
Hidden (5)	Hidden (5)	Hidden (5)	Hidden (5)	-
9 x 2 unit	9 x 2 unit	9 x 2 unit	9 x 2 unit	11 units
(6)	(6)	(6)	(6)	(6)
Housing 8 units (without locks)	Housing 8 units (without locks)	Housing 8 units (without locks)	Housing 8 units (without locks)	-
Front: Steel 450 mm x 2.550 mm Side: Aluminum 360 mm x 1.500 mm Rear: Aluminum 360 mm x 2.550 mm	Front: Steel 450 mm x 2.550 mm Side: Aluminum 360 mm x 1.500 mm Rear: Aluminum 360 mm x 2.550 mm	Front: Steel 450 mm x 2.550 mm Side: Aluminum 360 mm x 1.500 mm Rear: Aluminum 360 mm x 2.550 mm	Front: Steel 450 mm x 2.550 mm Side: Aluminum 360 mm x 1.500 mm Rear: Aluminum 360 mm x 2.550 mm	Aluminum Panels
(8)	(8)	(8)	(8)	-
(*Optional)	(*Optional)	(*Optional)	(*Optional)	-
(9)	(9)	(9)	(9)	-
1H-2H-3H	1H-2H-3H	1S-2H-3H-4H	1S-2H-3H-4H	1F-2N-3H-4H-5H-6H-7H-8H
Wired Control (*Optional)	Wired Control (*Optional)	Wired Control (*Optional)	Wired Control (*Optional)	Wired Control (*Optional)
Semi-auto (*Optional)	Semi-auto (*Optional)	Semi-auto (*Optional)	Semi-auto (*Optional)	Semi-auto (*Optional)
BPW (D)	BPW (D)	BPW (D)	BPW (D)	BPW (D)
WABCO EBS 2S/2M	WABCO EBS 2S/2M	WABCO EBS 4S/3M	WABCO EBS 4S/3M	WABCO EBS 6S/5M
Pneumatic	Pneumatic	Pneumatic	Pneumatic	Hydraulic
12 Tyres	12 Tyres	16 Tyres	16 Tyres	32 Tyres
245/70 R 17.5	245/70 R 17.5	245/70 R 17.5	245/70 R 17.5	245/70 R 17.5
Kässbohrer's Choice	Kässbohrer's Choice	Kässbohrer's Choice	Kässbohrer's Choice	Kässbohrer's Choice
Steel	Steel	Steel	Steel	Steel
1 unit	1 unit	1 unit	1 unit	1 unit
(10)	(10)	(10)	(10)	(10)
(18)	(18)	(18)	(18)	(18)
NATO Socket + Battery Clamp Cable	NATO Socket + Battery Clamp Cable	NATO Socket + Battery Clamp Cable	NATO Socket + Battery Clamp Cable	NATO Socket + Battery Clamp Cable
Manual Landing Gear with 24 ton mechanic, 50 ton static capacity	Manual Landing Gear with 24 ton mechanic, 50 ton static capacity	Manual Landing Gear with 24 ton mechanic, 50 ton static capacity	Manual Landing Gear with 24 ton mechanic, 50 ton static capacity	Manual Landing Gear with 24 ton mechanic, 50 ton static capacity
Manual Landing Gear with 45 ton static capacity	Manual Landing Gear with 45 ton static capacity	Manual Landing Gear with 45 ton static capacity	Manual Landing Gear with 45 ton static capacity	-
Full Bulb	Full Bulb	Full Bulb	Full Bulb	Full Bulb
1 unit	1 unit	1 unit	1 unit	1 unit
4 unit 1 meter Extendable Plates	4 unit 1 meter Extendable Plates	4 unit 1 meter Extendable Plates	4 unit 1 meter Extendable Plates	4 unit 1 meter Extendable Plates
(22)	(22)	(22)	(22)	(22)

STANDARD FEATURES



OPTIONS

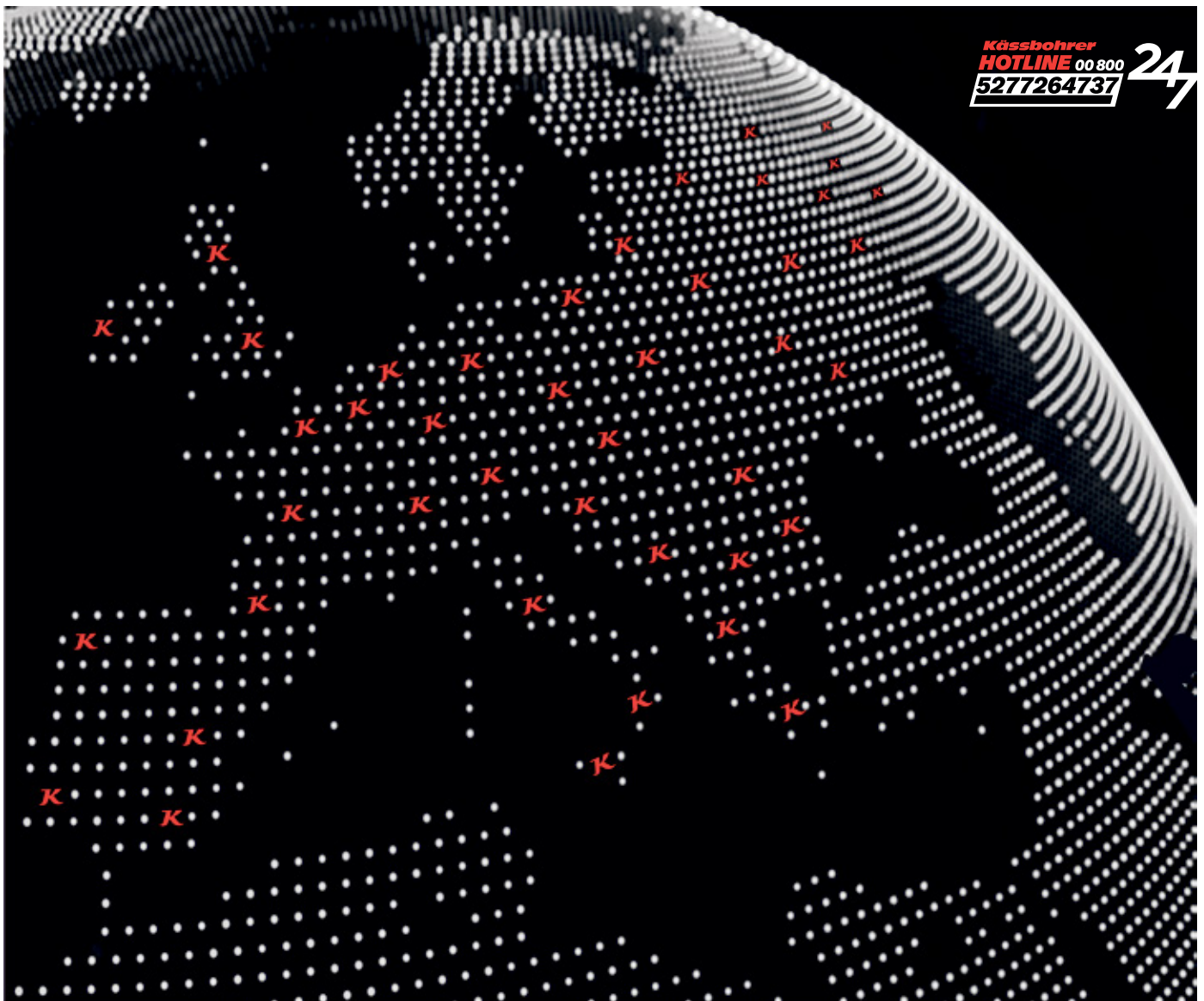




WE KNOW YOUR KÄSSBOHRER **AND WE WANT TO TAKE CARE OF IT**

Kässbohrer develops vehicles that push the boundaries of innovation and builds them to last. As our products are attuned to the needs of our customers worldwide, so are our services.

With K-Advance Care Service Packages tailored to each customer's operational needs as well as 24/7 Kässbohrer Hotline available in 27 countries and 23 languages, Kässbohrer's after-sales services are attuned to meet the versatile requirements.





KÄSSBOHRER PRODUCTION WORLDWIDE

Powered by its motto "Enginuity", Kässbohrer pushes the boundaries of vehicle engineering to meet the versatile needs of its customers worldwide. Much-acclaimed Trailer Innovation winner, Kässbohrer's vehicle quality is assured by the quality of its production processes.

For now and in the future, we will develop the products and services to take your business to the next level.

Ulm Plant | Germany



In 2017, Kässbohrer returned back home with its production facility investment in Ulm. Operating in 35.000 m², Ulm Plant serves as the main production facility for Southern Germany and the neighboring countries. Fully offering and servicing Kässbohrer's incomparably product range as the main sales and after-sales center, Ulm plant is also our spare parts warehouse.

Goch Plant | Germany



Since 2002, Goch Factory, operating in a total area of 108.000 m² is one of two production facilities in Germany. Serving as the main production and PDI center for Northern Europe, Goch Facility serves as after-sales and sales center for Nordrhein Westfalen Region as well as our spare parts warehouse.

Adapazari Plant | Turkey



Adapazari is Kässbohrer's biggest production plant with a total production area of 365.000 m² and has an annual production capacity of 20.000 units. Adapazari plant hosts R&D and prototype test centers on the campus. Last but not least, an area of 1.800 m² enables the production and testing of more than one prototype vehicle at a time.

Tula Plant | Russia



Kässbohrer is the first European trailer manufacturer with a production facility in Russia. Founded in 2011, Kaessbohrer LLC manages sales and production for the Russian market in an area of 50.000 m². Tula plant is the main after-sales center, along with the central spare parts warehouse for Russia.

Kässbohrer Sales GmbH

Ulm | Im Katzelwinkel 5, 88480 Achstetten, Germany | **T** +49 (0) 7392 96797-0 | **F** +49 (0) 7392 96797-67

Goch | Siemensstrasse 74, 47574 Germany | **T** +49 (0) 2823 9721-0 | **F** +49 (0) 2823 9721-21 | **E** info@kaessbohrer.com | www.kaessbohrer.com

Kässbohrer semi-trailers are manufactured according to lean production and quality principles in consideration of total cost of ownership.

Kässbohrer reserves the right to alter the product specification. Visual and technical data subject to change according to vehicle configuration. V2 April 2021