

K

PROVEN
RELIABILITY DURABILITY EFFICIENCY
SILO SERIES



Kässbohrer

Engenuity, since 1893



LIGHTEST CONSTRUCTION WITH MAXIMUM EFFICIENCY

K.SSL Non-Tipping Silo Series

Kässbohrer's non-tipping silo trailer series K.SSL is available with volumes of 31 m³, 35 m³, 38 m³, and 40 m³ according to the density of the material you wish to transport. K.SSL series is making a difference with its lightest weight, fast discharge, and high safety functions. With refined design and wheelbase, the K.SSL series provides high maneuverability even under challenging road conditions.

The K.SSL offers flexible discharge possibilities for various road and working conditions, such as stand-pipe strings that are positioned under or within the chassis for a discharge from the rear. In addition, lateral discharge via funnel is possible on the left or right side. A wide range of options is available, depending on your requirements. These include, additional chambers, filling couplings, and various others to meet your needs.



K.CON Container Silo Series

For intermodal transport, Kässbohrer manufactures 20 ft, 30 ft, and 40 ft silo containers responding to long-standing high-quality silo container demand. With its 60,4 m³ gross volume, K.CON S 40 has the biggest capacity available for 40 ft in the market.

Fully in compliance with CSC and with UIC-Rail codifications, K.CON S is also suitable for the transportation of food like sugar, flour, etc. with its stainless steel air lines and discharge line, grinded weldings, man-holes, and hose carriers. K.CON also provides proven stackability up to 170.000 kg and 5+1 storage with its tare weight and light frame.

Kässbohrer maintains the high quality and safety standards, thanks to its research and development team, the academically trained TÜV and DEKRA certified welders, and the meticulously executed test and analysis.





LIGHTEST FOR BEST PERFORMANCE WITH OPTIMAL DISCHARGE

K.SSK

Tipping Silo Series

Kässbohrer's K.SSK tipping silo series suitable for transporting powder, or granular materials such as ash, sugar, flour and much more are available in volumes starting from 40 m³ to 90 m³ depending on your specific transportation needs.

Kässbohrer is the only semi-trailer manufacturer capable of producing tipping silos in one piece, with a continuous aluminum chassis and with a volume up to 90 m³. The extruded one piece seamless chassis offers durability, long and efficient product life. With enhanced flow angles and smooth aluminum inner surfaces, Kässbohrer silos provide continuous material flow.

For user-friendly discharging, K.SSK series are developed with an electric pump of 4 kW for tipping operations and a 5-stage hydraulic cylinder with a lifting capacity of 150 bar pressure. Additionally, the K.SSK series offers stainless steel electropolished discharge cone and manifold as standard equipment for increased efficiency and maintenance.

Kässbohrer's K.SSK Safety Tipping Silo with Smart Control has received a nomination in Trailer Innovation 2019 Awards in the category "Safety" by automating the discharge process with safety parameter controls and improving the safety of the discharge operation of the silo in general.

K.SSK ADR

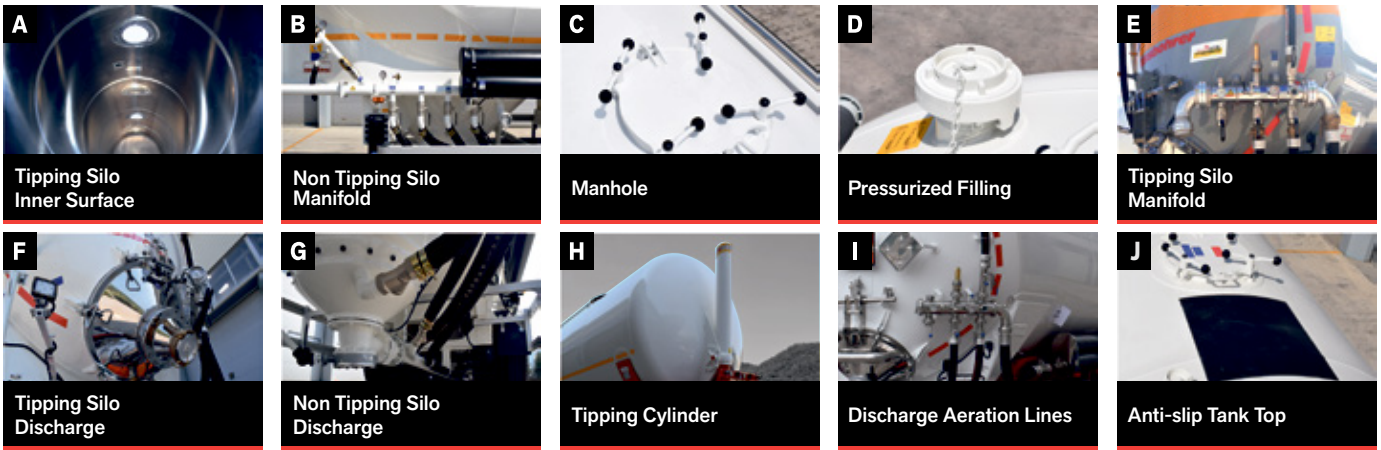
ADR Silo Series

Kässbohrer's K.SSK tipping ADR silo series are available as K.SSK ADR in volumes from 40 m³ to 60 m³ depending on your versatile dangerous powder and granular materials need such as carbide, coal, ashes, and metal chips. K.SSK ADR series, the lightest ADR silos in the market, are designed, analyzed, and tested with compliance to ECTA/DOW recommendations and ADR regulations.

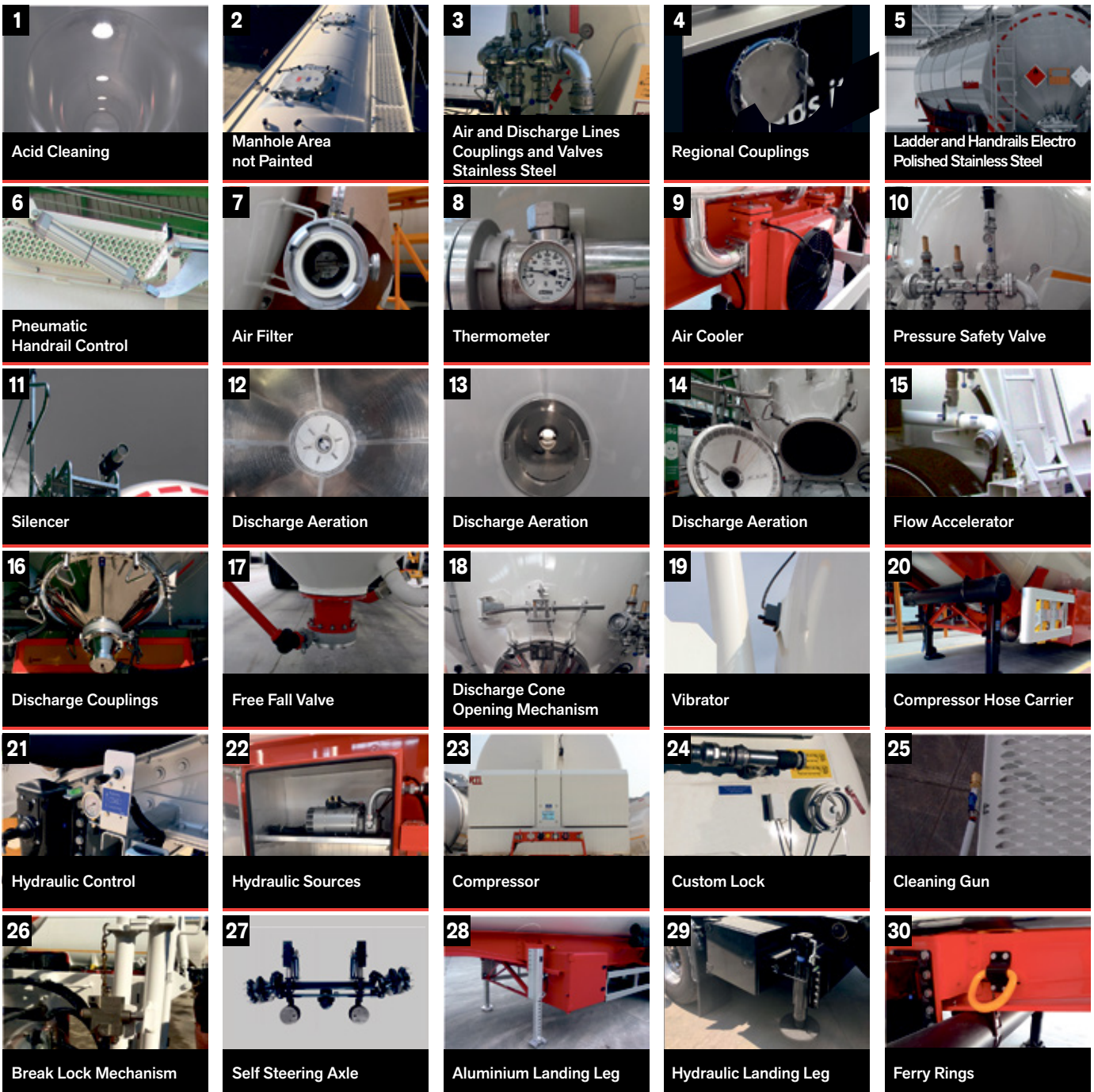


| | | NON-TIPPING SILO | | TIPPING SILO | | ADR TIPPING SILO | CONTAINER SILO |
|------------------|------------------------------|---|---|--|--|--|--|
| PRODUCT | | K.SSL 31 / 2 - 10 / 24 | K.SSL 35 / 2 - 10 / 24 | K.SSK 60 / 5 - 10 / 24 | K.SSK 90 / 8 - 10 / 24 | K.SSK 60 / 5 - 10 / 24 ADR | K.CON S 40 / 6 |
| TECHNICAL DATA | DANGEROUS GOODS TRANSPORT | Not Available | Not Available | Not Available | Not Available | S2.65AH Coded Tank | Not Available |
| | EXTERNAL LENGHT (L) | 9.315 mm | 9.670 mm | 12.875 mm | 14.000 mm | 13.070 mm | 40 ft / 13.070 mm |
| | TANK DIAMETER (D) | 2.550 mm | 2.550 mm | 2.530 mm | 2.550 mm | 2.530 mm | 2.540 mm |
| | WHEELBASE (WB) | 6.450 mm | 6.730 mm | 7.480 mm | 7.900 mm | 7.480 mm | - |
| | FIFTH WHEEL HEIGHT (H5) | 1.220 mm | 1.220 mm | 1.220 mm | 1.180 mm | 1.220 mm | - |
| | TANK THICKNESS | 4.5 mm | 4.5 mm | 4.5 mm | 4.5 mm | 7.0 mm | 5.0 mm |
| | HEAD THICKNESS (min) | 5.0 mm | 5.0 mm | 7.0 mm | 6.0 mm | 8.0 mm | 7.0 mm |
| | TARE WEIGHT ± %3 | 4.300 kg | 4.475 kg | 6.150 kg | 8.700 kg | 6.900 kg | 2.590 kg |
| | VOLUME | 31.0 m³ | 35.0 m³ | 60.0 m³ | 90.0 m³ | 60.0 m³ | 59.0 m³ |
| TANK | BODY TYPE | " W " Type Aluminum tank | " W " Type Aluminum tank | Aluminum cylindrical tank | Aluminum gooseneck tank with lateral supports | Aluminum cylindrical tank | Aluminum cylindrical tank |
| | COMPARTMENT | 1 compartment | 1 compartment | - | - | - | - |
| | FILLING | 2 x DN450 manhole and 1 x DN800 pressurized filling coupling | 2 x DN450 manhole and 1 x DN800 pressurized filling coupling | 5 x DN450 manhole and 1 x DN100 pressurized filling coupling | 8 x DN450 manhole and 1 x DN100 pressurized filling coupling | 5 x DN450 manhole and 1 x DN100 pressurized filling coupling | 5 x DN450 manhole and 1 x DN100 pressurized filling coupling |
| | CATWALK, LADDER and HANDRAIL | Aluminum walkway, foldable handrails, non-slip foldable ladder | Aluminum walkway, foldable handrails, non-slip foldable ladder | Aluminum walkway, foldable handrails, non-slip foldable ladder | Aluminum walkway, foldable handrails, non-slip foldable ladder | Aluminum walkway, foldable handrails, non-slip foldable ladder | Aluminum walkway, foldable handrails, non-slip ladder |
| AIRLINES | SIDE AIRLINE | Aluminum 3" side airline including removable brass checkvalve | Aluminum 3" side airline including removable brass checkvalve | Aluminum 3" side airline including removable brass checkvalve | Aluminum 3" side airline including removable brass checkvalve | Aluminum 3" side airline including removable brass checkvalve | Aluminum 3" side airline including removable brass checkvalve |
| | TOP AIRLINE | Aluminum 2" top airline at front | Aluminum 2" top airline at front | Aluminum 2" top airline including removable brass checkvalve | Aluminum 2" top airline including removable brass checkvalve | Aluminum 2" top airline including removable brass checkvalve | Aluminum 2" top airline including removable brass checkvalve |
| | MANIFOLD | - | - | Stainless steel electropolished 4" manifold with filter preperation and observation glass | Stainless steel electropolished 4" manifold with filter preperation and observation glass | Stainless steel electropolished 4" manifold with filter preperation and observation glass | Stainless steel electropolished 3" manifold |
| | AIR COUPLINGS and VALVES | Aluminum couplings and valves | Aluminum couplings and valves | Brass couplings and valves | Brass couplings and valves | Brass couplings and valves | Brass couplings and valves |
| | PRESSURE SAFETY | 2 bar safety valve | 2 bar safety valve | Vacuum and 2 bar safety valve | Vacuum and 2 bar safety valve | Vacuum and 2 bar safety valve | Vacuum and 2 bar safety valve |
| | AIR DISCHARGE | 2" stainless steel valve and protection | 2" stainless steel valve and protection | 2" stainless steel valve and removable elbow with dust protection | 2" stainless steel valve and removable elbow with dust protection | 2" stainless steel valve and removable elbow with dust protection | 2" stainless steel valve and removable elbow with dust protection |
| DISCHARGE SYSTEM | DISCHARGE CONE(S) | Aluminum roll-formed cylindrical single wall discharge cones | Aluminum roll-formed cylindrical single wall discharge cones | Stainless steel electropolished DN700 / 200 discharge cone, openable upwards, with DN200 butterfly valve, fixed reduction to DN 100 and brass coupling | Stainless steel electropolished DN700 / 200 discharge cone, openable upwards, with DN200 butterfly valve, fixed reduction to DN 100 and brass coupling | Stainless steel electropolished DN700 / 200 discharge cone, openable upwards, with DN200 butterfly valve, fixed reduction to DN 100 and brass coupling | Stainless steel electropolished DN600 / 150 discharge cone, openable sideways with DN150 butterfly valve |
| | AERATION | Fabric | Fabric | SOLIMAR 3 | SOLIMAR 3 | SOLIMAR 3 | SCHLITZ (Half Channel) |
| | DISCHARGE ELBOW | - | - | Stainless Steel 4" discharge elbow including 2" jet air inlet and removable checkvalve | Stainless Steel 4" discharge elbow including 2" jet air inlet and removable checkvalve | Stainless Steel 4" discharge elbow including 2" jet air inlet and removable checkvalve | - |
| | DISCHARGE LINE | Aluminum discharge line with pneumatic bottom valves ending at the rear of the trailer under the bumper | Aluminum discharge line with pneumatic bottom valves ending at the rear of the trailer under the bumper | - | - | - | - |
| | HOSE CARRIER | 2 units DN200 5mt hose carriers at right & left | 2 units DN200 5mt hose carriers at right & left | 4 units DN200 5mt hose carriers at right & left | 4 units DN200 5mt hose carriers at right & left | 4 units DN200 5mt hose carriers at right & left | - |
| HYDRAULIC | TIPPING SYSTEM | - | - | Telescopic hydraulic piston controlled by pneumatic valve | Telescopic hydraulic piston controlled by pneumatic valve | Telescopic hydraulic piston controlled by pneumatic valve | - |
| | HYDRAULIC SOURCE | - | - | Truck | Pump on the trailer | Truck | - |
| | BOX TYPE | Aluminum toolbox in body | Aluminum toolbox in body | Aluminum toolbox | Aluminum toolbox | Aluminum toolbox | - |
| RUNNING GEAR | CHASSIS | Aluminum box frame half chassis | Aluminum box frame half chassis | Aluminum extruded double T type | Aluminum extruded double T type | Aluminum extruded double T type | - |
| | AXLES | 3 units BPW 9 ton axles with air suspensions and 22.5" disc brakes, automatic 1st axle lifting | 3 units BPW 9 ton axles with air suspensions and 22.5" disc brakes, automatic 1st axle lifting | 3 units BPW 9 ton axles with air suspensions and 22.5" disc brakes, automatic 1st axle lifting | 3 units BPW 9 ton axles with air suspensions and 19.5" disc brakes | 3 units BPW 9 ton axles with air suspensions and 19.5" disc brakes | - |
| | BRAKE SYSTEM | EBS 2S/2M | EBS 2S/2M | EBS 2S/2M | EBS 2S/2M | EBS 2S/2M | - |
| | ELEC. SUSPENSION CONTROL | iLvl, Knorr - Bremse | iLvl, Knorr - Bremse | iLvl, Knorr - Bremse | iLvl, Knorr - Bremse | iLvl, Knorr - Bremse | - |
| | ELECTRIC SYSTEM | Standard lighting with Aspöck | Standard lighting with Aspöck | Standard lighting with Aspöck | Standard lighting with Aspöck | Standard lighting with Aspöck | - |
| | LANDING GEAR | 2 x 12 ton Jost steel | 2 x 12 ton Jost steel | 2 x 12 ton Jost steel at front, 2 x Jost mechanical at rear | 2 x 12 ton Jost steel at front, 2 x Jost mechanical at rear | 2 x 12 ton Jost steel at front, 2 x Jost mechanical at rear | - |
| | BUMPER TYPE | Aluminum bumper | Aluminum bumper | Aluminum bumper tilting with body | Aluminum bumper tilting with body | Aluminum bumper tilting with body | - |
| HANDLING | LIFTING | - | - | - | - | - | Only overhang |
| | STACKABILITY | - | - | - | - | - | 170.000 kg or 5+1 |

STANDARD FEATURES



OPTIONS

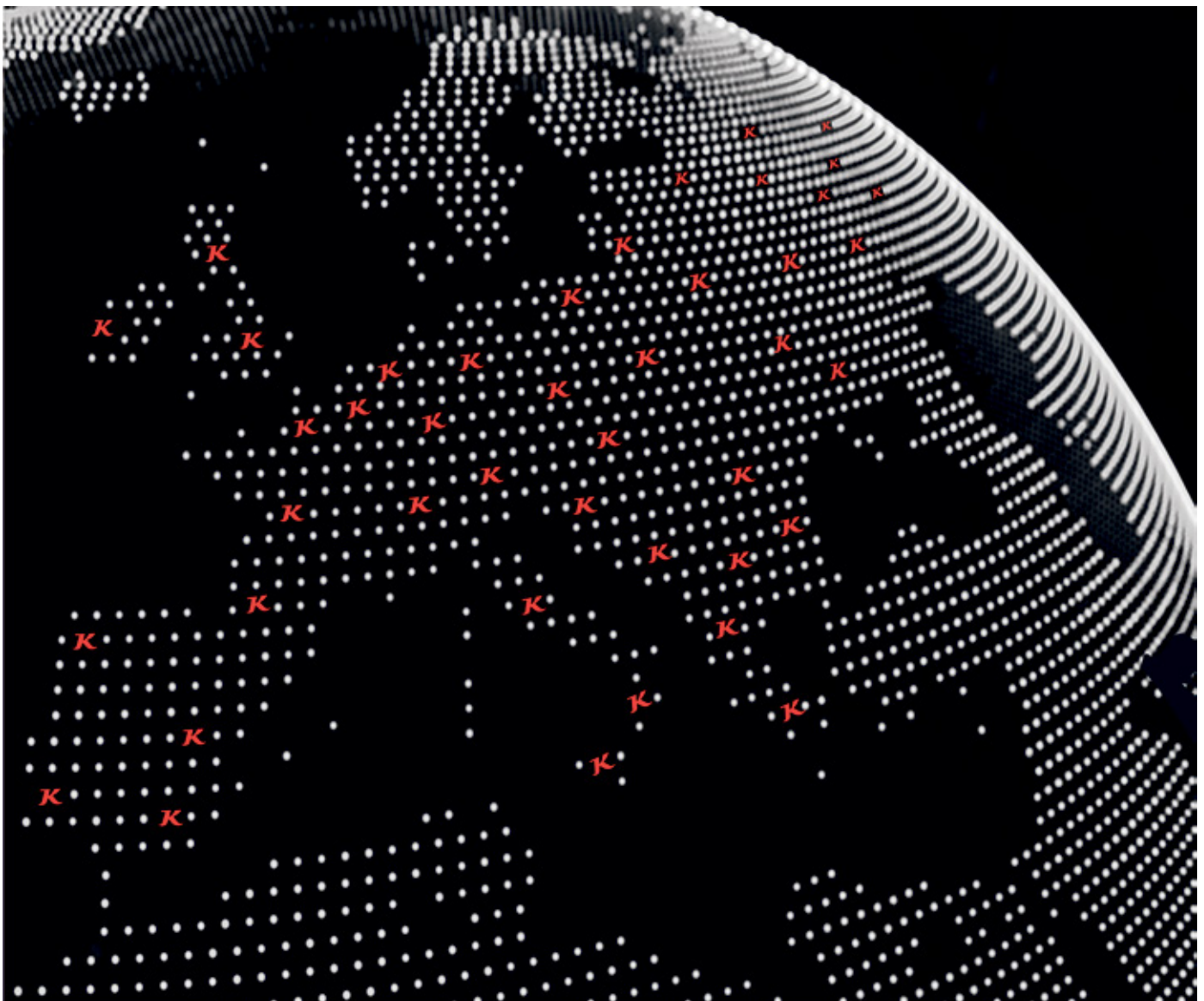




WE KNOW YOUR KÄSSBOHRER **AND WE WANT TO TAKE CARE OF IT**

Kässbohrer develops vehicles that push the boundaries of innovation and builds them to last. As our products are attuned to the needs of our customers worldwide, so are our services.

With K-Advance Care Service Packages tailored to each customer's operational needs as well as 24/7 Kässbohrer Hotline available in 27 countries and 23 languages, Kässbohrer's after-sales services are attuned to meet the versatile requirements.





KÄSSBOHRER

PRODUCTION WORLDWIDE

Powered by its motto "Enginuity", Kässbohrer pushes the boundaries of vehicle engineering to meet the versatile needs of its customers worldwide. Much-acclaimed Trailer Innovation winner, Kässbohrer's vehicle quality is assured by the quality of its production processes.

For now and in the future, we will develop the products and services to take your business to the next level.

Ulm Plant | Germany



In 2017, Kässbohrer returned back home with its production facility investment in Ulm. Operating in 35.000 m², Ulm Plant serves as the main production facility for Southern Germany and the neighboring countries. Fully offering and servicing Kässbohrer's incomparably product range as the main sales and after-sales center, Ulm plant is also our spare parts warehouse.

Goch Plant | Germany



Since 2002, Goch Factory, operating in a total area of 108.000 m² is one of two production facilities in Germany. Serving as the main production and PDI center for Northern Europe, Goch Facility serves as after-sales and sales center for Nordrhein Westfalen Region as well as our spare parts warehouse.

Adapazari Plant | Turkey



Adapazari is Kässbohrer's biggest production plant with a total production area of 365.000 m² and has an annual production capacity of 20.000 units. Adapazari plant hosts R&D and prototype test centers on the campus. Last but not least, an area of 1.800 m² enables the production and testing of more than one prototype vehicle at a time.

Tula Plant | Russia



Kässbohrer is the first European trailer manufacturer with a production facility in Russia. Founded in 2011, Kaessbohrer LLC manages sales and production for the Russian market in an area of 50.000 m². Tula plant is the main after-sales center, along with the central spare parts warehouse for Russia.

Kässbohrer Sales GmbH

Ulm | Im Katzelwinkel 5, 88480 Achstetten, Germany | **T** +49 (0) 7392 96797-0 | **F** +49 (0) 7392 96797-67

Goch | Siemensstrasse 74, 47574 Germany | **T** +49 (0) 2823 9721-0 | **F** +49 (0) 2823 9721-21 | **E** info@kaessbohrer.com | www.kaessbohrer.com

Kässbohrer semi-trailers are manufactured according to lean production and quality principles in consideration of total cost of ownership.

Kässbohrer reserves the right to alter the product specification. Visual and technical data subject to change according to vehicle configuration. V2 April 2021

Kässbohrer

Enginuity, since 1893