



RELIABLE ROBUST

# STEEL & ALUMINUM TIPPER SERIES





# LIGHT MODULAR EFFICIENCY IN OPERATIONS

## K.SKA A

### **Aluminum Tipper Series for Agricultural Material Transportation**

Kässbohrer's tipper series with an aluminum upper structure, K.SKA A for agricultural material transportation is the result of Kässbohrer's extensive experience in tipper product segment.

Available with 40, 45, 50 m<sup>3</sup> volume options, K.SKA A is engineered to offer low center of gravity and optimal load distribution even in the toughest off-road conditions.

K.SKA A is ingeniously designed with most user friendly and time saving operational features, such as new lightweight bumper, walking platform and grain sliders, K. SKA A series stand for long product life with S700MC light steel chassis, hybrid floor and high wear and impact resistant aluminum modular upper structure.

Suitable to carry a wide range of agricultural materials such as soy, corn, rapeseed, sugar beet, sediments, grains and more, K.SKA A can also carry bio-waste, pallet goods, bagged waste and fertilizers.

Additionally, K.SKA A features lashing rings on the floor for the safe transportation of pallet loads ensuring operational flexibility.



## K.SKA B

### **Aluminum Tipper Series for Construction**

Kässbohrer aluminum tipper semi-trailer, K.SKA series, with its high strength chassis and tough aluminum upper structure stands for reliability and robustness under the hardest load and road conditions.

K.SKA can be manufactured with volume options from 24 m<sup>3</sup> to accommodate unique transport challenges. Thanks to its unique light design at 4.980 kg tare weight, K.SKA series offers more payload and higher fuel efficiency. The upper body is designed with interlocking aluminum side panels, 40 mm thickness with 4 mm profiles which are the widest size in the market. Hence the design ensures structural strength while offering long body service life and less maintenance cost with easier maintenance.

K.SKA's modular floor provides the unrivaled robustness that is 3 times more impact resistant and 2 times more wear resistant than the average market products. This modular structure facilitates easy repair by removing only the partial damaged zone instead of the entire floor hence less maintenance and repair costs. Floor optionally can be equipped with wear plates to have a longer life cycle. Rounded lower corners of the floor provide faster discharge and prevent material residues.

The robust chassis with a cathaphoretic dip coating (KTL) process offers durability and persistence throughout the economic life of the vehicle.





# UNIQUE DESIGN FOR EFFICIENT TRANSPORTATION

K.SKS

## Steel Tipper Series








Kässbohrer's re-engineered tipper semi-trailer K.SKS series is offered with 2 or 3 axles and with 22 m<sup>3</sup>, 24 m<sup>3</sup>, 27 m<sup>3</sup> and 32 m<sup>3</sup> volume options. With its high-strength chassis and unique U-shaped design with 14 times-bended upper structure, manufactured with Hardox450 side walls and TUF500 floor, K.SKS provides fast and easy discharge, reliability, robustness, and operational efficiency.

Optimized for the weight/robustness scale, Kässbohrer K.SKS series, presents operational efficiency with the tare weight starting from 5.350 kg providing maximum payload to meet the needs of its customers' construction operations.

Kässbohrer K.SKS series also offers the maximum traction performance on the road and ideal load distribution for road safety with its unique upper body structure design, robust construction as well as 12.000 kg king-pin capacity.



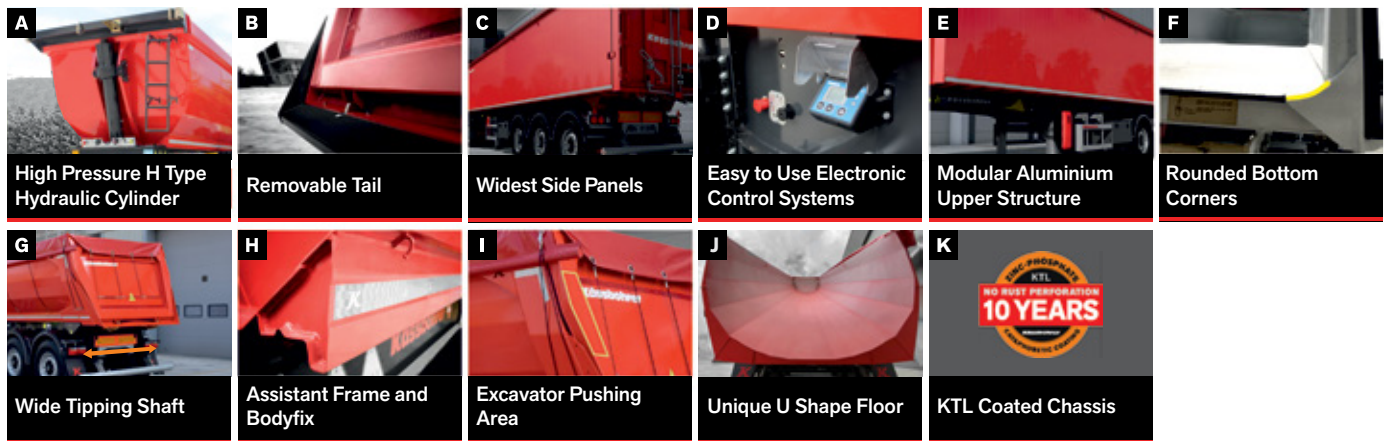
### WALL THICKNESS & LOAD TYPE COMPATIBILITY

Side Thickness	3 mm	4 mm	4 mm	4 mm	5 mm	6 mm	8 mm
Floor Thickness	4 mm	4 mm	5 mm	6 mm	6 mm	8 mm	10 mm
Representation							
Load Type	Ash Fine Sand Cement	Fine Sand Grain	Sand Asphalt Grain Clay	Gravel < 30 mm Clay	Gravel < 60 mm Chipped Wood	Stone	Rock Mined Ore

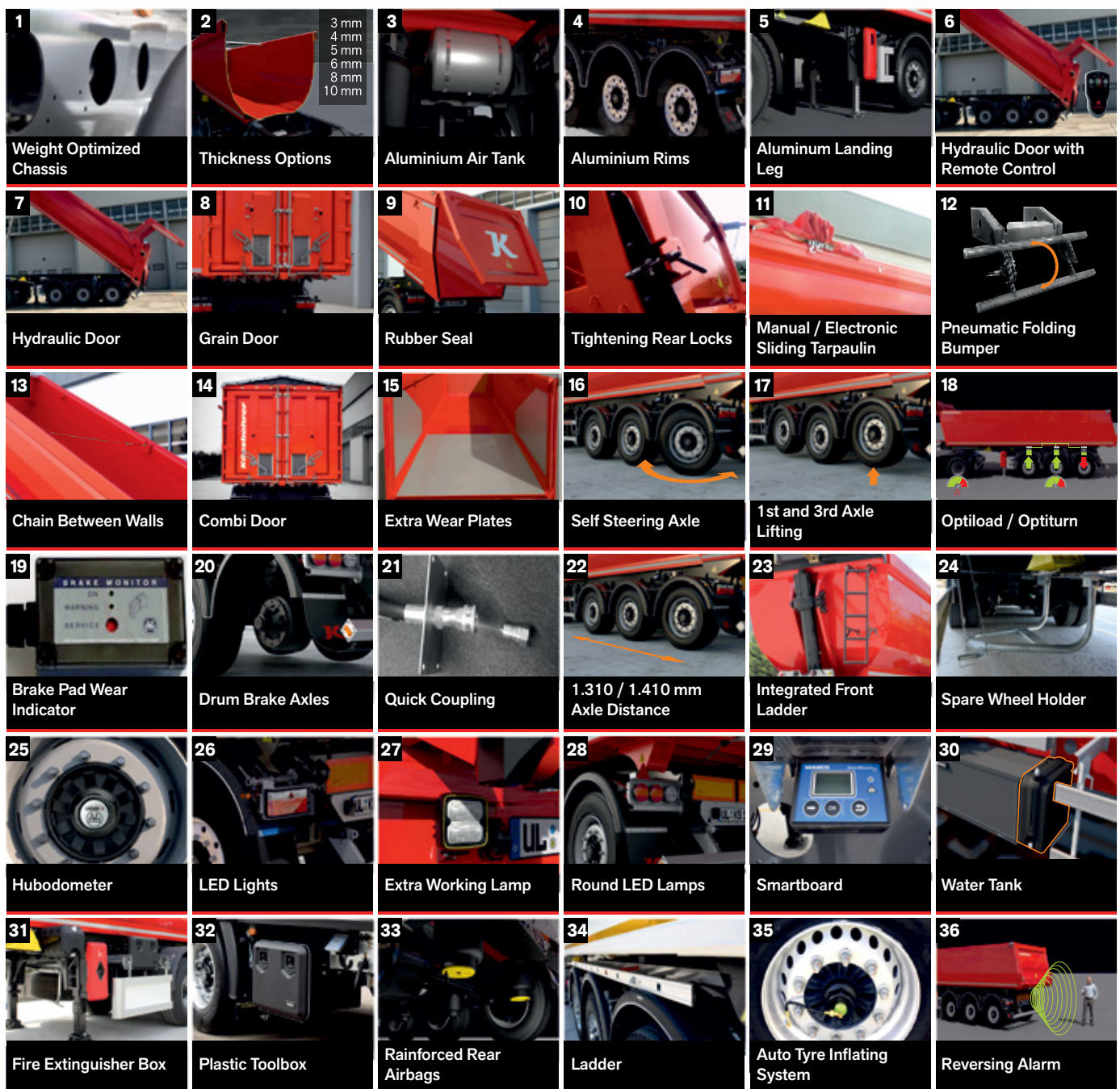


		3 AXLE STEEL FOR CONSTRUCTION				3 AXLE ALUMINUM FOR CONSTRUCTION			4 AXLE ALUMINUM FOR CONSTRUCTION	3 AXLE ALUMINUM FOR AGRICULTURE				
PRODUCT		K.SKS BS / 22 - 12 / 27	K.SKS B / 24 - 12 / 27	K.SKS BS / 27 - 12 / 27	K.SKS BS / 32 - 12 / 27	K.SKA B / 24 - 12 / 27	K.SKA B / 26 - 12 / 27	K.SKA B / 29 - 12 / 27	K.SKA B / 37 - 12 / 36	K.SKA A / 40 - 12 / 27	K.SKA A / 45 - 12 / 27	K.SKA A / 50 - 12 / 27	K.SKA AG / 55 - 12 / 27	K.SKA AG / 60 - 12 / 27
UPPERSTRUCTURE	UPPERSTRUCTURE TYPE	Halfpipe (J)	Halfpipe (J)	Halfpipe (J)	Halfpipe (J)	Box (E)	Box (E)	Box (E)	Box (E)	Box (E)	Box (E)	Box (E)	Box (E)	Box (E)
	VOLUME OPTIONS	22 m³	24 m³	27 m³	32 m³	24 m³	26 m³	29 m³	37 m³	40 m³	45 m³	50 m³	55 m³	60 m³
	BODY MATERIAL	HB 450 Hardox	TUF500	TUF500	HB 450 Hardox	6.000 series Alu	6.000 series Alu	6.000 series Alu	6.000 series Alu	6.000 series Alu	6.000 series Alu	6.000 series Alu	6.000 series Alu	6.000 series Alu
	BODY HEIGHT	1.490 mm	1.550 mm	1.700 mm	1.700 mm	1.260 mm	1.360 mm	1.550 mm	1.600 mm	1.660 mm	1.850 mm	2.050 mm	2.150 mm	2.350 mm
	BODY WIDTH	2.390 mm (G)	2.390 mm (G)	2.390 mm (G)	2.390 mm (G)	2.450 mm (G)	2.450 mm (G)	2.450 mm (G)	2.450 mm (G)	2.450 mm (G)	2.450 mm (G)	2.450 mm (G)	2.450 mm (G)	2.450 mm (G)
	BODY LENGTH	6.850 mm	7.900 mm	7.900 mm	8.970 mm	7.800 mm	7.800 mm	7.800 mm	9.140 mm	9.800 mm	10.000 mm	10.000 mm	10.900 mm	10.900 mm
BODY THICKNESS		Front 4 mm Rear 4 mm Sides 4 mm Floor 4 mm (2)	Front 5 mm Rear 5 mm Sides 4 mm Floor 4 mm (2)	Front 4 mm Rear 4 mm Sides 4 mm Floor 4 mm (2)	Front 5mm Rear 5 mm Side 4+2 mm Floor 6 mm (2)	Front 5mm Rear 5 mm Side 4+2 mm Floor 6 mm (2)	Front 5mm Rear 5 mm Side 4+2 mm Floor 6 mm (2)	Front 5mm Rear 5 mm Side 4+2 mm Floor 6 mm (2)	Front 5mm Rear 5 mm Side 4+2 mm Floor 6 mm (2)	Front 5 mm Rear 5 mm Sides 4+2 mm Floor 6/8 mm (2)	Front 5 mm Rear 5 mm Sides 4+2 mm Floor 6/8 mm (2)	Front 5 mm Rear 5 mm Sides 4+2 mm Floor 6/8 mm (2)	Front 5 mm Rear 5 mm Sides 4+2 mm Floor 6/8 mm (2)	Front 5 mm Rear 5 mm Sides 4+2 mm Floor 6/8 mm (2)
CHASSIS	CHASSIS MATERIAL	S700MC Steel (1)	S700MC Steel (1)	S700MC Steel (1)	S700MC Steel (1)	S700MC Steel (1)	S700MC Steel (1)	S700MC Steel (1)	S700MC Steel (1)	S700MC Steel (1)	S700MC Steel (1)	S700MC Steel (1)	Aluminum Chasis	Aluminum Chasis
	ANTI-CORROSION FOR CHASSIS	KTL Coating (K)	KTL Coating (K)	KTL Coating (K)	KTL Coating (K)	KTL Coating (K)	KTL Coating (K)	KTL Coating (K)	KTL Coating (K)	KTL Coating (K)	KTL Coating (K)	KTL Coating (K)	-	-
	TRUCK COMPATIBILITY	4x2, 4x4, 6x2, 6x4	4x2, 4x4, 6x2, 6x4	4x2, 4x4, 6x2, 6x4	4x2, 4x4, 6x2, 6x4	4x2, 4x4, 6x2, 6x4	4x2, 4x4, 6x2, 6x4	4x2, 4x4, 6x2, 6x4	4x2, 4x4, 6x2, 6x4	4x2, 6x2	4x2, 6x2	4x2, 6x2	4x2, 4x4, 6x2, 6x4	4x2, 4x4, 6x2, 6x4
	FINISHER COMPATIBILITY	Yes	Yes	Yes	Yes	Yes	Yes	Yes	Yes	No	No	No	No	No
TECHNICAL SPECIFICATIONS	VEHICLE HEIGHT	3.100 mm	2.980 mm	3.130 mm	3.250 mm	2.900 mm	3.000 mm	3.160 mm	3.240 mm	3.280 mm	3.500 mm	3.700 mm	3.750 mm	3.950 mm
	MINIMUM TARE WEIGHT	5.640 kg	5.350 kg	5.850 kg	7.720 kg	5.040 kg	5.090 kg	5.170 kg	7.750 kg	5.700 kg	5.700 kg	6.070 kg	6.400 kg	6.530 kg
	CHASSIS LENGTH	7.550 mm	7.550 mm	7.550 mm	9.270 mm	8.100 mm	8.100 mm	8.100 mm	9.980 mm	9.600 mm	9.600 mm	9.600 mm	10.600 mm	10.600 mm
	EXTERNAL LENGTH	8.800 mm	8.800 mm	8.800 mm	10.600 mm	9.100 mm	9.100 mm	9.100 mm	11.360 mm	11.260 mm	11.260 mm	11.260 mm	12.200 mm	12.200 mm
	COUPLING HEIGHT (min-max)	1.220 mm - 1.350 mm	1.220 mm - 1.350 mm	1.220 mm - 1.320 mm	1.250 mm - 1.350 mm	1.220 mm - 1.350 mm	1.220 mm - 1.350 mm	1.220 mm - 1.350 mm	1.200-1.220 mm	1.200 mm - 1.250 mm	1.200 mm - 1.250 mm	1.200 mm - 1.250 mm	1.180 mm	1.180 mm
	AXLE DISTANCES	1.310 mm (22)	1.310 mm (22)	1.310 mm (22)	1.310 mm (22)	1.310 mm (22)	1.310 mm (22)	1.310 mm (22)	1.310 mm (22)	1.310 mm (22)	1.310 mm (22)	1.310 mm (22)	1.310 mm (22)	1.310 mm (22)
	KING-PIN CAPACITY	12 - 15 ton	12 - 15 -18 ton	12 - 15 -18 ton	12 - 15 -18 ton	12 - 15 ton	12 - 15 ton	12 - 15 ton	18 ton	12 - 15 ton	12 - 15 ton	12 - 15 ton	12 - 15 ton	12 - 15 ton
	AXLES CAPACITY	27 ton	27 ton	27 ton	27 ton	27 ton	27 ton	27 ton	36 ton	27 ton	27 ton	27 ton	27 ton	27 ton
	MAX TIPPING ANGLE	45°	45°	45°	47°	48°	48°	48°	48°	43°	43°	43°	40°	40°
REAR DOOR OPTIONS	MECHANIC	Mechanic Door	Mechanic Door	Mechanic Door	Mechanic Door	Mechanic Door	Mechanic Door	Mechanic Door	Mechanic Door	Mechanic Door	Mechanic Door	Mechanic Door	Mechanic Door	Mechanic Door
	HYDRO-MECHANIC	Hydraulic Door (7)	Hydraulic Door (7)	Hydraulic Door (7)	Hydraulic Door (7)	-	-	-	-	-	-	-	-	-
	HYDRAULIC WITH REMOTE CONTROL	Hydraulic Door with Remote Control (6)	Hydraulic Door with Remote Control (6)	Hydraulic Door with Remote Control (6)	Hydraulic Door with Remote Control (6)	-	-	-	-	-	-	-	-	-
	CHUTE	Bolted	-	-	Bolted	Welded (Optional)	Welded (Optional)	Welded (Optional)	Welded (Optional)	-	-	-	-	-
	COMBI - UNIVERSAL	-	Combi Door (14)	Combi Door (14)	-	-	-	-	-	Combi Door (14)	Combi Door (14)	Combi Door (14)	Combi Door (14)	Combi Door (14)
	SINGLE GRAIN DOOR	Single Grain Door	Single Grain Door	Single Grain Door	Single Grain Door	Single Grain Door	Single Grain Door	Single Grain Door	Single Grain Door	Single Grain Door	Single Grain Door	Single Grain Door	Single Grain Door	Single Grain Door
	DOUBLE GRAIN DOOR	Double Grain Door (8)	Double Grain Door (8)	Double Grain Door (8)	Double Grain Door (8)	Double Grain Door (8)	Double Grain Door (8)	Double Grain Door (8)	Double Grain Door (8)	Double Grain Door (8)	Double Grain Door (8)	Double Grain Door (8)	Double Grain Door (8)	Double Grain Door (8)
	ONE HINGE PIVOT	One Hinge Pivot	One Hinge Pivot	One Hinge Pivot	One Hinge Pivot	One Hinge Pivot	One Hinge Pivot	One Hinge Pivot	One Hinge Pivot	One Hinge Pivot	One Hinge Pivot	One Hinge Pivot	One Hinge Pivot	One Hinge Pivot
	DOUBLE HINGE PIVOT	Double Hinge Pivot	Double Hinge Pivot	Double Hinge Pivot	Double Hinge Pivot	Double Hinge Pivot	Double Hinge Pivot	Double Hinge Pivot	Double Hinge Pivot	Double Hinge Pivot	Double Hinge Pivot	Double Hinge Pivot	Double Hinge Pivot	Double Hinge Pivot

## STANDARD FEATURES



## OPTIONS





# WE KNOW YOUR KÄSSBOHRER **AND WE WANT TO TAKE CARE OF IT**

Kässbohrer develops vehicles that push the boundaries of innovation and builds them to last. As our products are attuned to the needs of our customers worldwide, so are our services.

Taking care of your needs where ever your operations are in Europe, 95% of our ever-growing competent after-sales service network is certified to serve Europe's widest product range. Kässbohrer's website is constantly updated with the latest information for your convenience.

With K-Advance Care Service Packages tailored to each customer's operational needs as well as a 24/7 Kässbohrer Hotline available in 27 countries and 23 languages, Kässbohrer's after-sales services are attuned to meet the versatile requirements.







# KÄSSBOHRER PRODUCTION WORLDWIDE

Powered by its motto “Enginuity”, Kässbohrer pushes the boundaries of vehicle engineering to meet the versatile needs of its customers worldwide. Winner of the prestigious Trailer Innovation Award, Kässbohrer vehicle quality is secured by the technological expertise of its production processes.

For now and in the future, Kässbohrer will continue developing products and services to take your business to the next level.



## Ulm Plant | Germany

In 2017, Kässbohrer returned back home with its production facility investment in Ulm. Operating in 35.000 m<sup>2</sup>, Ulm Plant serves as the main production facility for Southern Germany and the neighboring countries. Fully offering and servicing Kässbohrer's incomparably product range as the main sales and after-sales center, Ulm plant is also our spare parts warehouse.



## Goch Plant | Germany

Since 2002, Goch Factory, operating in a total area of 108.000 m<sup>2</sup> is one of two production facilities in Germany. Serving as the main production and PDI center for Northern Europe, Goch Facility serves as after-sales and sales center for Nordrhein Westfalen Region as well as our spare parts warehouse.



## Adapazari Plant | Turkey

Adapazari is Kässbohrer's biggest production plant with a total production area of 365.000 m<sup>2</sup> and has a total production capacity of 20.000 units. Adapazari plant hosts R&D and prototype test centers on the campus. Last but not least, an area of 3.500 m<sup>2</sup> enables the production and testing of more than one prototype vehicle at a time.

### Kässbohrer Sales GmbH

**Ulm** | Im Katzelwinkel 5, 88480 Achstetten, Germany | **T** +49 (0) 7392 96797-0 | **F** +49 (0) 7392 96797-67

**Goch** | Siemensstrasse 74, 47574 Germany | **T** +49 (0) 2823 9721-0 | **F** +49 (0) 2823 9721-21 | **E** [info@kaessbohrer.com](mailto:info@kaessbohrer.com) | [www.kaessbohrer.com](http://www.kaessbohrer.com)

Kässbohrer semi-trailers are manufactured according to lean production and quality principles in consideration of total cost of ownership. Kässbohrer reserves the right to alter the product specification. Visual and technical data subject to change according to vehicle configuration. v4 Sep 2022