

K

PROVEN
RELIABILITY DURABILITY EFFICIENCY
SILO SERIES





LIGHTEST CONSTRUCTION WITH MAXIMUM EFFICIENCY

K.SSL Non-Tipping Silo Series

Kässbohrer's non-tipping silo trailer series K.SSL is available with volumes of 31 m³, 33 m³, 35 m³, 38 m³, 40 m³, 45 m³ and 54 m³ according to the density of the material you wish to transport. K.SSL series is making a difference with its lightest weight, fast discharge, and high safety functions. With refined design and wheelbase, the K.SSL series provides high maneuverability even under challenging road conditions.

The K.SSL offers flexible discharge possibilities for various road and working conditions, such as stand-pipe strings that are positioned under or within the chassis for a discharge from the rear. In addition, lateral discharge via funnel is possible on the left or right side. A wide range of options is available, depending on your requirements. These include, additional chambers, filling couplings, and various others to meet your needs.

K.CON Container Silo Series

For intermodal transport, Kässbohrer manufactures 20 ft, 30 ft, and 40 ft silo containers responding to long-standing high-quality silo container demand. With its 60,4 m³ gross volume, K.CON S 40 has the biggest capacity available for 40 ft in the market.

Fully in compliance with CSC and with UIC-Rail codifications, K.CON S is also suitable for the transportation of food like sugar, flour, etc. with its stainless steel air lines and discharge line, grinded weldings, man-holes, and hose carriers. K.CON also provides proven stackability up to 136.000 kg and 4+1 storage with its tare weight and light frame.

Kässbohrer maintains the high quality and safety standards, thanks to its research and development team, the academically trained TÜV and DEKRA certified welders, and the meticulously executed test and analysis.





LIGHTEST FOR BEST PERFORMANCE WITH OPTIMAL DISCHARGE

K.SSK

Tipping Silo Series

Kässbohrer's K.SSK tipping silo series suitable for transporting powder, or granular materials such as ash, sugar, flour and much more are available in volumes starting from 40 m³ to 90 m³ depending on your specific transportation needs.

Kässbohrer is the only semi-trailer manufacturer capable of producing tipping silos in one piece, with a continuous aluminum chassis and a volume up to 90 m³. The extruded one piece seamless chassis offers durability, long and efficient product life. In addition enhanced flow angles and smooth aluminum inner surfaces, Kässbohrer silos provide continuous material flow.

For user-friendly discharging, K.SSK series are developed with an electric pump of 4 kW for tipping operations and a 5-stage hydraulic cylinder with a lifting capacity of 150 bar pressure. Additionally, the K.SSK series offers stainless steel electropolished discharge cone and manifold as standard equipment for increased efficiency and maintenance.

Kässbohrer's K.SSK Safety Tipping Silo with Smart Control has received a nomination in Trailer Innovation 2019 Awards in the category "Safety" by automating the discharge process with safety parameter controls and improving the safety of the discharge operation of the silo in general.

K.SSK ADR

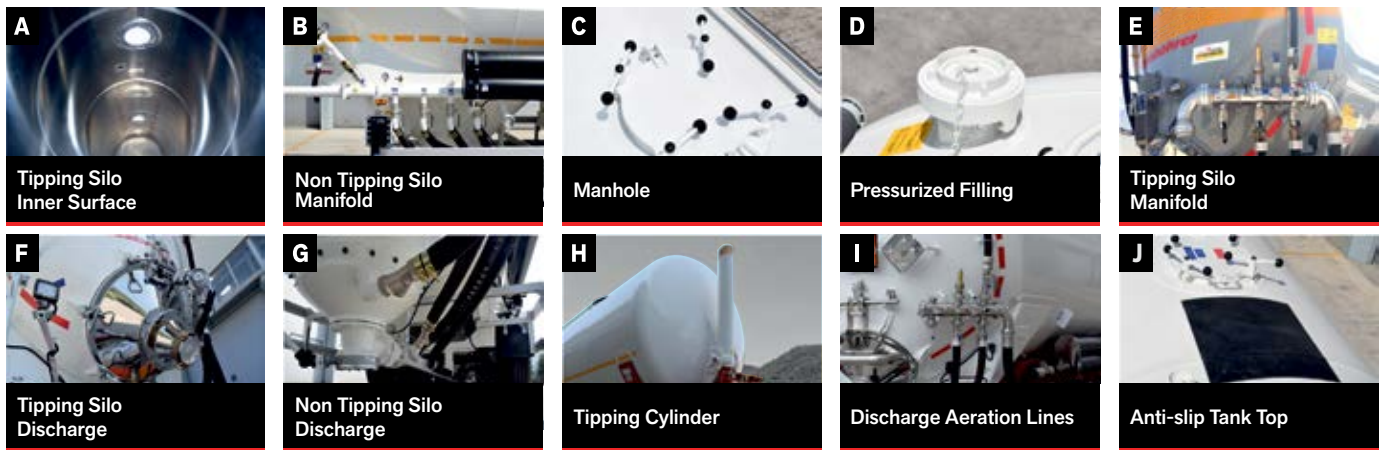
ADR Silo Series

Kässbohrer's K.SSK tipping ADR silo series are available as K.SSK ADR in volumes from 40 m³ to 60 m³ depending on your versatile dangerous powder and granular materials need such as carbide, coal, ashes, and metal chips. K.SSK ADR series, the lightest ADR silos in the market, are designed, analyzed, and tested with compliance to ECTA/DOW recommendations and ADR regulations.

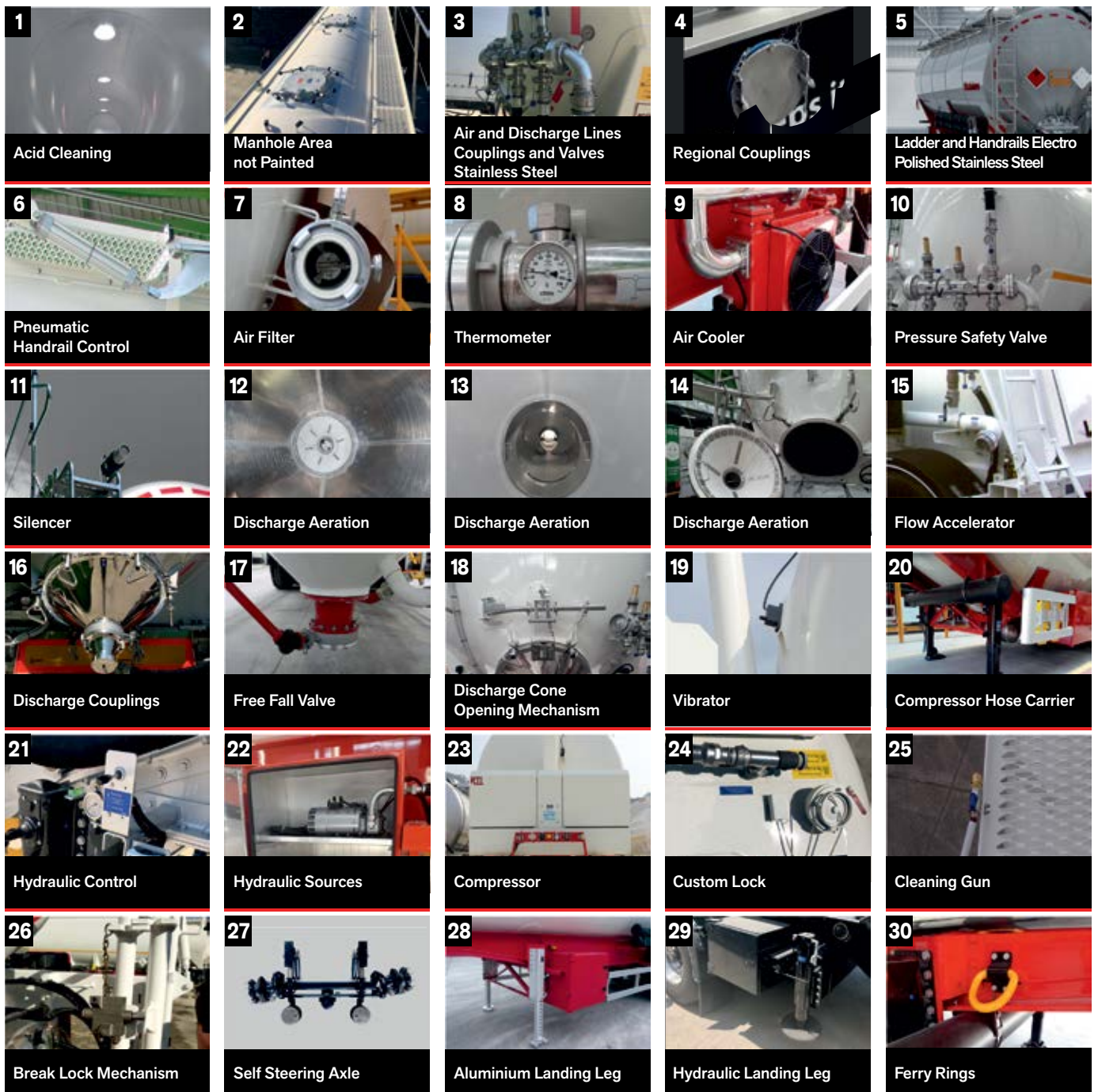


		NON TIPPING SILO					TIPPING SILO		ADR TIPPING SILO	CONTAINER SILO
PRODUCT		K.SSL 33 / 2 - 10 / 24	K.SSL 35 / 2 - 10 / 24	K.SSL 40 / 2 - 10 / 24	K.SSL 45 / 2 - 10 / 24	K.SSL 54 / 4 - 10 / 24	K.SSK 60 / 5 - 10 / 24	K.SSK 90 / 8 - 10 / 24	K.SSK 60 / 5 - 10 / 24 ADR	K.CON S 40 / 6
TECHNICAL SPECIFICATIONS	DANGEROUS GOODS TRANSPORT	Not Available	Not Available	Not Available	Not Available	Not Available	Not Available	Not Available	S2.65AH Coded Tank	Not Available
	EXTERNAL LENGHT	9.385 mm	9.730 mm	11.060 mm	11.285 mm	11.850 mm	12.875 mm	14.000 mm	13.070 mm	40 ft / 12.192 mm
	TANK DIAMETER	2.550 mm	2.550 mm	2.550 mm	2.550 mm	2.550 mm	2.530 mm	2.550 mm	2.530 mm	2.530 mm
	WHEELBASE	6.475 mm	6.730 mm	7.950 mm	7.800 mm	8.135 mm	7.480 mm	7.900 mm	7.480 mm	-
	FIFTH WHEEL HEIGHT	1.220 mm	1.220 mm	1.220 mm	1.220 mm	1.220 mm	1.220 mm	1.180 mm	1.220 mm	-
	TANK THICKNESS	4.5 mm	4.5 mm	4.5 mm	4.5 mm	4.5 mm	4.5 mm	4.5 mm	4.5 mm	5.0 mm
	HEAD THICKNESS (MIN)	5.0 mm	5.0 mm	5.0 mm	5.0 mm	5.0 mm	7.0 mm	6.0 mm	8.0 mm	7.0 mm
	TARE WEIGHT	4.415 kg	4.475 kg	4.940 kg	5.100 kg	5.200 kg	6.150 kg	8.700 kg	6.900 kg	2.590 kg
VOLUME	33.0 m³	35.0 m³	40.0 m³	45.0 m³	54.0 m³	60.0 m³	90.0 m³	60.0 m³	60.4 m³	
TANK STRUCTURE	BODY TYPE	" W " Type Aluminum tank	" W " Type Aluminum tank	" W " Type Aluminum tank	" W " Type Aluminum tank	" W " Type Aluminum tank	Aluminum cylindrical tank	Aluminum gooseneck tank with lateral supports	Aluminum cylindrical tank	Aluminum cylindrical tank
	COMPARTMENT	1 compartment	1 compartment	1 compartment	1 compartment	1 compartment	-	-	-	-
	FILLING	2 x DN450 manhole and 1 x DN80 pressurized filling coupling	2 x DN450 manhole and 1 x DN100 pressurized filling coupling	3 x DN450 manhole and 1 x DN80 pressurized filling coupling	3 x DN450 manhole and 1 x DN80 pressurized filling coupling	4 x DN450 manhole and 1 x DN80 pressurized filling coupling	5 x DN450 manhole and 1 x DN100 pressurized filling coupling	8 x DN450 manhole and 2 x DN100 pressurized filling coupling	5 x DN450 manhole and 1 x DN100 pressurized filling coupling	6 x DN450 manhole and 2 x DN100 pressurized filling coupling
	CATWALK, LADDER AND HANDRAIL	Aluminum walkway, foldable handrails, non-slip foldable ladder	Aluminum walkway, foldable handrails, non-slip foldable ladder	Aluminum walkway, foldable handrails, non-slip foldable ladder	Aluminum walkway, foldable handrails, non-slip foldable ladder	Aluminum walkway, foldable handrails, non-slip foldable ladder	Aluminum walkway, foldable handrails, non-slip foldable ladder	Aluminum walkway, foldable handrails, non-slip foldable ladder	Aluminum walkway, foldable handrails, non-slip foldable ladder	Aluminum walkway, foldable handrails, non-slip foldable ladder
AIRLINES	SIDE AIRLINE	Aluminum 3" side airline including removable brass checkvalve	Aluminum 3" side airline including removable brass checkvalve	Aluminum 3" side airline including removable brass checkvalve	Aluminum 3" side airline including removable brass checkvalve	Aluminum 3" side airline including removable brass checkvalve	Aluminum 3" side airline including removable brass checkvalve	Aluminum 3" side airline including removable brass checkvalve	Aluminum 3" side airline including removable brass checkvalve	Aluminum 3" side airline including removable brass checkvalve
	TOP AIRLINE	Aluminum 2" top airline at front	Aluminum 2" top airline at front	Aluminum 2" top airline at front	Aluminum 2" top airline at front	Aluminum 2" top airline at rear	Aluminum 2" top airline including removable brass checkvalve	Aluminum 2" top airline including removable brass checkvalve	Aluminum 2" top airline including removable brass checkvalve	Aluminum 2" top airline including removable brass checkvalve
	MANIFOLD	-	-	-	-	-	Stainless steel electropolished 4" manifold with filter preparation and observation glass	Stainless steel electropolished 4" manifold with filter preparation and observation glass	Stainless steel electropolished 4" manifold with filter preparation and observation glass	Stainless steel electropolished 3" manifold
	AIR COUPLINGS AND VALVES	Aluminum couplings and valves	Aluminum couplings and valves	Aluminum couplings and valves	Aluminum couplings and valves	Aluminum couplings and valves	Brass couplings and valves	Brass couplings and valves	Brass couplings and valves	Brass couplings and valves
	PRESSURE SAFETY	2 bar safety valve	2 bar safety valve	2 bar safety valve	2 bar safety valve	2 bar safety valve	Vacuum and 2 bar safety valve	Vacuum and 2 bar safety valve	Vacuum and 2 bar safety valve	Vacuum and 2 bar safety valve
AIR DISCHARGE	2" stainless steel valve and protection	2" stainless steel valve and protection	2" stainless steel valve and protection	2" stainless steel valve and protection	2" stainless steel valve and protection	2" stainless steel valve and removable elbow with dust protection	2" stainless steel valve and removable elbow with dust protection	2" stainless steel valve and removable elbow with dust protection	2" stainless steel valve and removable elbow with dust protection	
DISCHARGE SYSTEM	DISCHARGE CONE (S)	Aluminum roll-formed cylindrical single wall discharge cones	Aluminum roll-formed cylindrical single wall discharge cones	Aluminum roll-formed cylindrical single wall discharge cones	Aluminum roll-formed cylindrical single wall discharge cones	Aluminum roll-formed cylindrical single wall discharge cones	Stainless steel electropolished DN700 / 200 discharge cone, openable upwards, with DN200 butterfly valve, fixed reduction to DN 100 and brass coupling	Stainless steel electropolished DN700 / 200 discharge cone, openable upwards, with DN200 butterfly valve, fixed reduction to DN 100 and brass coupling	Stainless steel electropolished DN700 / 200 discharge cone, openable upwards, with DN200 butterfly valve, fixed reduction to DN 100 and brass coupling	Stainless steel electropolished DN600 / 150 discharge cone, openable sideways with DN150 butterfly valve
	AERATION	Fabric	Fabric	Fabric	Fabric	Fabric	SOLIMAR 3	SOLIMAR 3	SOLIMAR 3	SCHLITZ (Half Channel)
	DISCHARGE ELBOW	-	-	-	-	-	Stainless Steel 4" discharge elbow including 2" jet air inlet and removable checkvalve	Stainless Steel 4" discharge elbow including 2" jet air inlet and removable checkvalve	Stainless Steel 4" discharge elbow including 2" jet air inlet and removable checkvalve	-
	DISCHARGE LINE	Aluminum discharge line with pneumatic bottom valves ending at the rear of the trailer under the bumper	Aluminum discharge line with pneumatic bottom valves ending at the rear of the trailer under the bumper	Aluminum discharge line with pneumatic bottom valves ending at the rear of the trailer under the bumper	Aluminum discharge line with pneumatic bottom valves ending at the rear of the trailer under the bumper	Stainless Steel discharge line with pneumatic bottom valves ending at the rear of the trailer under the bumper	-	-	-	-
	HOSE CARRIER	2 units DN200 5mt hose carriers at right & left	2 units DN200 5mt hose carriers at right & left	2 units DN200 5mt hose carriers at right & left	2 units DN200 5mt hose carriers at right & left	2 units DN200 5mt hose carriers at right	4 units DN200 5mt hose carriers at right & left	4 units DN200 5mt hose carriers at right & left	4 units DN200 5mt hose carriers at right & left	-
HYDRAULIC	TIPPING SYSTEM	-	-	-	-	-	Telescopic hydraulic piston controlled by pneumatic valve	Telescopic hydraulic piston controlled by pneumatic valve	Telescopic hydraulic piston controlled by pneumatic valve	-
	HYDRAULIC SOURCE	-	-	-	-	-	Truck	Pump on the trailer	Truck	-
	BOX TYPE	Aluminum toolbox in body	Aluminum toolbox in body	Aluminum toolbox in body	Aluminum toolbox in body	Aluminum toolbox in body	Aluminum toolbox	Aluminum toolbox	Aluminum toolbox	-
RUNNING GEAR	CHASSIS	Aluminum box frame half chassis	Aluminum box frame half chassis	Aluminum box frame half chassis	Aluminum box frame half chassis	Aluminum box frame half chassis	Aluminum extruded double T type	Aluminum extruded double T type	Aluminum extruded double T type	-
	AXLES	3 units BPW 9 ton axles with air suspensions and 22.5" disc brakes, automatic 1st axle lifting	3 units BPW 9 ton axles with air suspensions and 22.5" disc brakes, automatic 1st axle lifting	3 units BPW 9 ton axles with air suspensions and 22.5" disc brakes, automatic 1st axle lifting	3 units BPW 9 ton axles with air suspensions and 22.5" disc brakes, automatic 1st axle lifting	3 units BPW 9 ton axles with air suspensions and 22.5" disc brakes, automatic 1st axle lifting	3 units BPW 9 ton axles with air suspensions and 22.5" disc brakes, automatic 1st axle lifting	3 units BPW 9 ton axles with air suspensions and 19.5" disc brakes	3 units BPW 9 ton axles with air suspensions and 19.5" disc brakes	-
	BRAKE SYSTEM	EBS 2S/2M	EBS 2S/2M	EBS 2S/2M	EBS 2S/2M	EBS 2S/2M	EBS 2S/2M	EBS 2S/2M	EBS 2S/2M	-
	ELEC. SUSPENSION CONTROL	iLvl, Knorr - Bremse	iLvl, Knorr - Bremse	iLvl, Knorr - Bremse	iLvl, Knorr - Bremse	iLvl, Knorr - Bremse	iLvl, Knorr - Bremse	iLvl, Knorr - Bremse	iLvl, Knorr - Bremse	-
	ELECTRIC SYSTEM	Standard lighting with Aspöck	Standard lighting with Aspöck	Standard lighting with Aspöck	Standard lighting with Aspöck	Standard lighting with Aspöck	Standard lighting with Aspöck	Standard lighting with Aspöck	Standard lighting with Aspöck	-
	LANDING GEAR	2 x 12 ton Jost steel	2 x 12 ton Jost steel	2 x 12 ton Jost steel	2 x 12 ton Jost steel	2 x 12 ton Jost steel	2 x 12 ton Jost steel at front, 2 x Jost mechanical at rear	2 x 12 ton Jost steel at front, 2 x Jost mechanical at rear	2 x 12 ton Jost steel at front, 2 x Jost mechanical at rear	-
	BUMBER TYPE	Aluminum bumper	Aluminum bumper	Aluminum bumper	Aluminum bumper	Aluminum bumper	Aluminum bumper tilting with body	Aluminum bumper tilting with body	Aluminum bumper tilting with body	-
HANDLING	LIFTING	-	-	-	-	-	-	-	-	Only overhang
	STACKABILITY	-	-	-	-	-	-	-	-	170.000 kg or 5+1

STANDARD FEATURES



OPTIONS





WE KNOW YOUR KÄSSBOHRER **AND WE WANT TO TAKE CARE OF IT**

Kässbohrer develops vehicles that push the boundaries of innovation, and builds them to last. As our products are attuned to the needs of our customers worldwide, so are our services.

Taking care of your needs wherever your operations are in Europe, 95 % of our ever-growing competent after-sales service network is certified to serve the entire Kässbohrer product range. Kässbohrer's website is constantly updated with the latest information for your convenience.

With K-Advance Care Service packages tailored to each customer's operational needs, and with Europe's 4th largest after-sales network, 24 hour dispatch guarantee spare parts services from six centers as well as the 24/7 Kässbohrer Road Assistance hotline available in 41 countries and 12 languages, Kässbohrer after-sales services are attuned to meet the versatile requirements.





KÄSSBOHRER

PRODUCTION WORLDWIDE

Powered by its motto "Enginuity", Kässbohrer pushes the boundaries of vehicle engineering to meet the versatile needs of its customers worldwide. Winner of the prestigious Trailer Innovation Award six times and counting, Kässbohrer vehicles' long and useful product life is secured by the expertise of its production processes.

For now and in the future, Kässbohrer will continue developing products and services to take your business to the next level.



Ulm Plant | Germany

In 2017, Kässbohrer returned back home by investing in a new production facility near Ulm. Operating on 35,000 m², the Ulm plant serves as the main production facility for southern Germany and the neighboring countries. Fully offering and servicing Kässbohrer's incomparable product range as main sales and after-sales center, Ulm plant also serves as a spare parts warehouse.



Goch Plant | Germany

Since 2002, Goch factory, operating on a total area of 108,000 m² is one of two production facilities in Germany. Serving as the main production, PDI and sales center for Northern Europe, the Goch facility also serves as main after-sales center for northern and western Germany and the Benelux region, comprising a spare parts warehouse expanded in 2021.



Adapazarı Plant | Türkiye

Adapazarı is Kässbohrer's biggest production plant with a total production area of 383,000 m² and has a total production capacity of 20,000 units. With rooftop solar power plant investment completed in 2023, providing 92 % of the plant's electricity needs from the sun, manufacturing in Adapazarı emits 46 % less CO₂ (ISO 14064-1 and 14064-2 certified).

Kässbohrer Sales GmbH

Ulm | Im Katzelwinkel 5, 88480 Achstetten, Germany | **T** +49 (0) 7392 96797-0 | **F** +49 (0) 7392 96797-67

Goch | Siemensstrasse 74, 47574 Germany | **T** +49 (0) 2823 9721-0 | **F** +49 (0) 2823 9721-21 | **E** info@kaessbohrer.com | www.kaessbohrer.com

Kässbohrer semi-trailers are manufactured according to lean production and quality principles in consideration of total cost of ownership. Kässbohrer reserves the right to alter the product specification. Visual and technical data subject to change according to vehicle configuration. v5 Sep 2024