

# K

## SAFE TRANSPORTATION OF LIQUID GOODS **TANKER SERIES**





# TRUSTWORTHY DANGEROUS GOODS TRANSPORTATION

K.STB E

## Fuel Oil Tanker Series

Kässbohrer's precisely engineered K.STB E stands out in fuel oil transportation with its safety, efficiency and manufacturing.

To meet versatile transportation needs, K.STB E from 39 m<sup>3</sup> to 45 m<sup>3</sup> can be equipped with 1 to 7 compartment options, mechanical and electronic dipstick systems, seal parcel delivery systems, pump, counter, hose reel, and collector.

In compliance with ADR regulations, K.STB E features advanced safety functions including overfill protections.

K.STB E's advanced anti-theft system with special components and digital systems ensure the security of your operations.

With a tare weight starting from 5.150 kg, the vehicle offers operational efficiency and enables lower fuel consumption.

Kässbohrer takes your business to the next level, thanks to its research and development team, the academically trained TÜV and DEKRA certified welders, and the meticulously executed test and analyses.

K.STS

## Bitumen Tanker Series

Kässbohrer's Trailer Innovation 2017 Award Category "Safety" winner bitumen tanker semi-trailer K.STS meets the needs of hot petrochemical goods transportation and is the choice of leading European transportation companies.

Kässbohrer Bitumen tanker series offer a range of volume options 30 m<sup>3</sup>, 32 m<sup>3</sup>, 34 m<sup>3</sup> and 37,5 m<sup>3</sup> ensuring a perfect fit for your bitumen transportation needs.

With its award-winning wireless remote control for discharge, K.STS enables the safest bitumen loading and discharge operations.

Starting from 6.250 kg tare weight and tank diameter of 2.000 mm, K.STS offers operational efficiency and enables lower fuel consumption. To meet the needs of versatile working conditions, K.STS can be equipped with different insulation thicknesses of 100 mm to 200 mm, aluminum insulation cover and insulated dome covers.

Kässbohrer K.STS is fully in compliance with ADR regulations.





# RELIABLE TRANSPORTATION OF DELICATE LIQUID GOODS

K.STL

## Food Tanker Series

Kässbohrer's ATP IN-Class certified K.STL food tanker series has been developed to provide safe liquid food transportation of food stuff goods from vegetable oil and milk whey as well as from chocolate to specific beverages. K.STL meet the highest hygiene standards featuring acid cleaned inner surface and CIP cleaning lines that reach every point inside the tank ensuring zero residue. With 30 m<sup>3</sup> volume, 3 compartments and KTL coated steel chassis, the vehicle stands for durability. With an empty weight of 5.750 kg, K.STL enables increased load capacity and is more environmentally friendly by reducing fuel consumption, offering high efficiency whether it is filled or empty.

In addition to K.STL, Kässbohrer also offers pressurized food tanker K.STL P that has been engineered to provide secure transportation of delicate goods such as chocolate, nut cream and specific beverages.

Kässbohrer sets new standards with K.STL P's hygiene features such as 2R quality inner surface, smoothed and polished weldings and CIP cleaning lines with 8 stainless-steel rotating cleaning balls to reach and clean every point of the tank

K.STL P is offered with 31m<sup>3</sup> or 32 m<sup>3</sup> volume, 1 - 3 compartments and electro-polished stainless steel chassis starting from the tare weight of 7.100 kg and reduces fuel consumption. Addressing versatile operational needs, K.STL P can be offered with self-heating food type pumps, air filters, sterile box and collector for single discharging.



K.STC

## Chemical Tanker Series

Kässbohrer's ADR stainless steel chemical tanker series K.STC can be offered with various volume options from 28 m<sup>3</sup> to 37,5 m<sup>3</sup> and is the lightest chemical tanker series on the market including 30 m<sup>3</sup>. K.STC 30 with 6.500 kg tare weight, presenting unparalleled operational efficiency along with uncompromising safety. With versatile compartment configurations, walkthrough baffle possibility, insulation and heating options as well as discharge systems, K.STC ensures safe, easy and continuous operations.

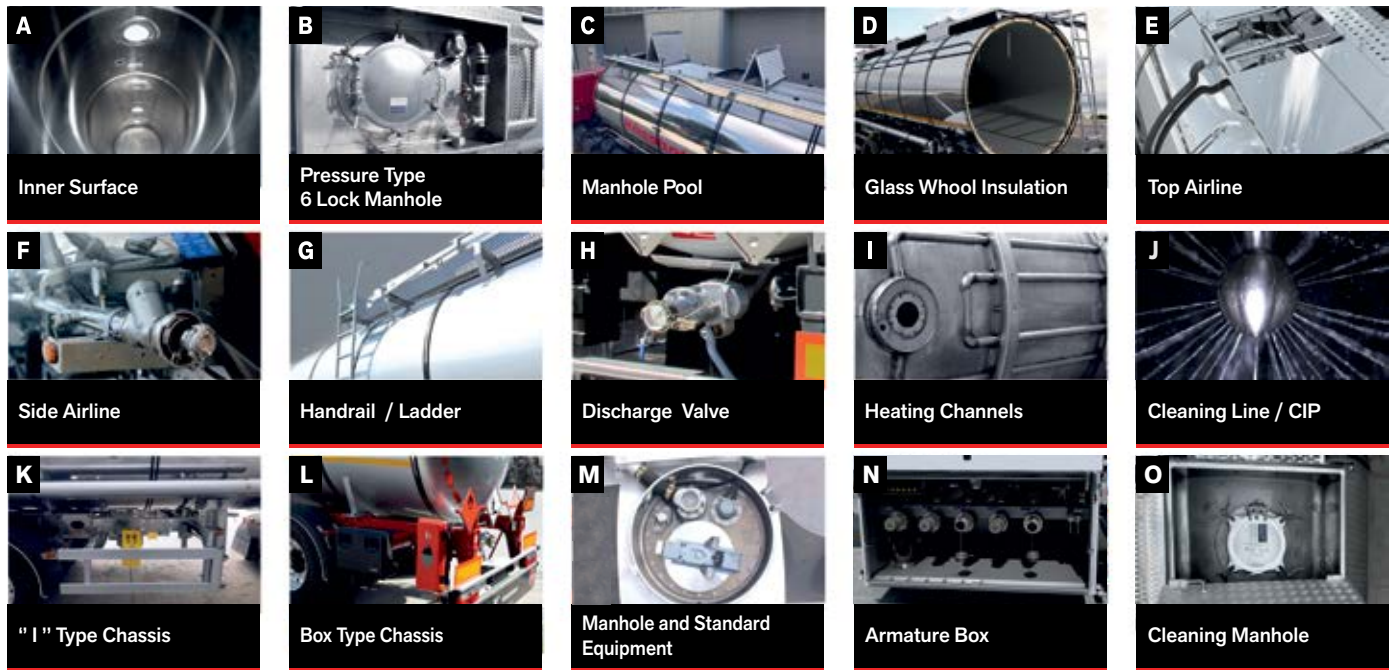
Addressing operational needs in different climate conditions, K.STC features a wide selection of insulation options, including glass wool insulation of 100 mm or 150 mm thickness, with stainless steel, aluminum or GRP cladding and stainless steel insulation rings and FRP insulated end domes. Additionally, K.STC is equipped with heating channels under the tank to keep your goods at the needed temperature.

With the R&D team meticulously executing tests and analyses and TÜV and DEKRA certified, academically trained welders, Kässbohrer ensures the highest-quality and efficiency in its Chemical Tanker Series.

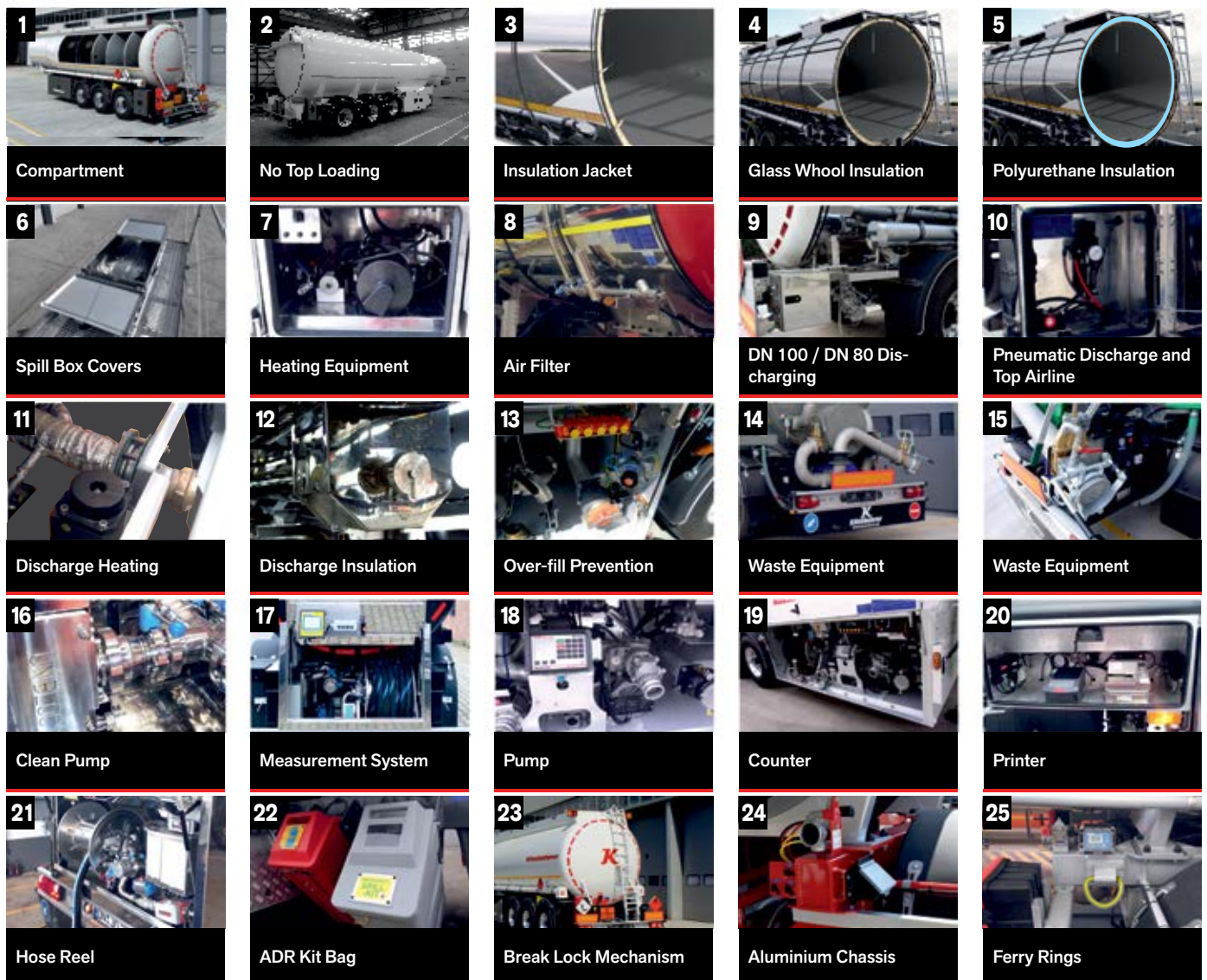


|                                      |   | FUEL OIL TANKER  | CHEMICAL TANKER  |  |   | ADBLUE TANKER   | MOLASSE TANKER  | BITUMEN TANKER  | FOODSTUFF TANKER   |                          |
|--------------------------------------|---|--|--|--|---|---|---|---|--|--------------------------|
| PRODUCT                              |   | K.STB E 39 / 5 - 11 / 24   | K.STC 30 / 1 - 10 / 24   | K.STC PR 30 / 1 - 10 / 24  | K.STC PR 37,5 / 1 - 10 / 24                             | K.STC AB 28 / 1 - 10 / 24   | K.STC M 32 / 1 - 10 / 24                                | K.STS 32 / 1 - 10 / 24  | K.STL 30 / 3 - 10 / 24   | K.STL P 32 / 3 - 10 / 24 |
| TECHNICAL SPECIFICATIONS             | PRODUCT TYPE  | Fuel Oil Tanker  | Chemical Tanker  | Chemical Tanker  | Chemical Tanker   | Ad-blue Tanker  | Molasse Tanker  | Bitumen Tanker  | Foodstuff Tanker   | Foodstuff Tanker         |
|                                      | EXTERNAL LENGHT   | 11.420 mm  | 10.530 mm  | 10.565 mm  | 10.565 mm   | 9.750 mm  | 10.955 mm   | 11.250 mm   | 10.300 mm  | 11.580 mm                |
|                                      | TANK DIAMETER   | 2.350 mm   | 2.000 mm   | 2.000 mm   | 2.000 mm  | 2.000 mm  | 2.000 mm  | 2.000 mm  | 2.000 mm   | 2.000 mm                 |
|                                      | WHEELBASE   | 6.700 mm   | 5.900 mm   | 5.900 mm   | 5.900 mm  | 5.600 mm  | 6.050 mm  | 6.300 mm  | 5.800 mm   | 6.400 mm                 |
|                                      | FIFTH WHEEL HEIGHT                                      | 1.220 mm   | 1.220 mm   | 1.180 mm   | 1.180 mm  | 1.220 mm  | 1.220 mm  | 1.220 mm  | 1.220 mm   | 1.180 mm                 |
|                                      | TANK THICKNESS  | 5,0 mm   | 3,0 mm   | 3,0 mm   | 3,0 mm  | 3,0 mm  | 3,0 mm  | Min 3,0 mm  | 2,0 mm   | 2,5 mm                   |
|                                      | HEIGHT  | 3.680 mm   | 3.685 mm   | 3.725 mm   | 3.725 mm  | 3.700 mm  | 3.475 mm  | 3.600 mm  | 3.650 mm   | 3.750 mm                 |
|                                      | TARE WEIGHT   | 5.650 kg   | 6.800 kg   | 6.550 kg   | 7.200 kg  | 5.450 kg  | 6.300 kg  | 6.400 kg  | 5.750 kg   | 7.120 kg                 |
|                                      | FRONT OVERHANG SWEEPING RADIUS                          | 1.395 mm   | 1.310 mm   | 1.310 mm   | 1.350 mm  | 1.200 mm  | 1.540 mm  | 1.370 mm  | 1.150 mm   | 1.280 mm                 |
|                                      | REAR OVERHANG SWEEPING RADIUS                           | 2.070 mm   | 2.300 mm   | 2.300 mm   | 3.355 mm  | 2.300 mm  | 2.345 mm  | 2.350 mm  | 2.100 mm   | 2.280 mm                 |
| AXLE DISTANCE                        | 1.310 mm  | 1.310 mm   | 1.310 mm   | 1.310 mm   | 1.310 mm  | 1.310 mm  | 1.310 mm  | 1.310 mm  | 1.310 mm   |                          |
| ADR TANK CODE                        | L4BH  | L4BH   | L4BH   | L4BH   | -   | -   | L4BH  | -   | -  |                          |
| TANK FINISH                          | -   | 2B with acid cleaning  | 2B with acid cleaning  | 2B with acid cleaning  | 2B  | 2B  | 2B  | 2B with acid cleaning   | 2R   |                          |
| TANK MATERIAL                        | Aluminium   | 1.4571   | 1.4571   | 1.4571   | 1.4301  | 1.4301  | 1.4541  | 1.4301  | 1.4301   |                          |
| VOLUME                               | 39.000 lt   | 30.000 lt  | 30.000 lt  | 37.500 lt  | 28.000 lt   | 32.000 lt   | 32.000 lt   | 30.000 lt   | 32.000 lt  |                          |
| COMPARTMENT DIVISION                 | 5   | 1  | 1  | 1  | 1   | 1   | 1   | 3   | 3  |                          |
| BAFFLE PLATE                         | 3   | 3  | 3  | 4  | 2   | 4   | 4   | -   | -  |                          |
| VACUUM PRESSURE                      | -0,017 Bar  | -0,21 Bar  | -0,21 Bar  | -0,21 Bar  | -0,017 Bar  | -0,017 Bar  | -0,21 Bars  | -   | -0,017 Bars  |                          |
| WORKING TEMPERATURE                  | 50 °C   | 150 °C   | 120 °C   | 120 °C   | 80 °C   | 80 °C   | 250 °C  | 120 °C  | 120 °C   |                          |
| TEST PRESSURE                        | 0.35 Bar  | 4,0 Bar  | 4,0 Bar  | 4,0 Bar  | 0.1 Bar   | 0.1 Bar   | 4,0 Bar   | -   | 3,0 Bars   |                          |
| OPERATION PRESSURE                   | -   | 3,0 Bar  | 2,6 Bar  | 2,6 Bar  | -   | -   | 2,0 Bar   | -   | 2,0 Bars   |                          |
| INSULATION THICKNESS                 | -   | 100 mm Glasswool   | 100 mm Glasswool   | 100 mm Glasswool   | 100 mm Glasswool  | 100 mm Glasswool  | 100 mm Glasswool  | 100 mm Glasswool  | 50 mm Polyurethane   | 100 mm Glasswool         |
| INSULATION COATING                   | -   | Stainless-steel Electropolished                                      | Stainless-steel Electropolished  | Stainless-steel Electropolished  | Painted Aluminium                                       | Stainless-steel electropolished   | Painted Aluminium                                       | Stainless-steel Electropolished                               | Stainless-steel Electropolished                                    |                          |
| SPILL BOX COVER                      | -   | Aluminium foldable non-insulated                                     | Aluminium foldable %100 flat opening non-insulated                     | Aluminium foldable %100 flat opening non-insulated                     | Aluminium foldable non-insulated                        | -   | Not-Included  | Stainless steel foldable non-insulated                        | Stainless steel foldable insulated                                 |                          |
| SPILL BOX MATERIAL                   | Aluminium   | Stainless-steel Electropolished                                      | Stainless-steel Electropolished  | Stainless-steel Electropolished  | Stainless-steel Electropolished                         | Stainless-steel   | Stainless-steel   | Stainless-steel Electropolished                               | Stainless-steel Electropolished                                    |                          |
| HOSE PROTECTION BARRIER              | -   | -  | -  | -  | -   | -   | -   | On the right side   | On the left side   |                          |
| HANDRAIL                             | Aluminium at right, full tank length                    | Stainless-steel Electropolished, full tank length                    | Stainless-steel Electropolished, full tank length                      | Stainless-steel Electropolished, full tank length                      | Aluminium around the manhole                            | Aluminium full tank length  | Aluminium around the manhole                            | Stainless-steel Electropolished, full tank length             | Stainless-steel Electropolished, full tank length                  |                          |
| LADDER                               | Aluminium at the rear right side                        | Stainless-steel Electropolished, At the rear side on the left        | Stainless-steel Electropolished, full tank length on the left          | Stainless-steel Electropolished, full tank length on the left          | Aluminium at the right side                             | Aluminium at the rear right side  | Aluminium at the right side                             | Stainless-steel Electropolished, At the rear side on the left | Stainless-steel Electropolished, At the rear side on the right     |                          |
| CATWALK                              | Aluminium at right, full tank length                    | Aluminium full tank length and around the manholes                   | Aluminium full tank length and around the manholes                     | Aluminium full tank length and around the manholes                     | Aluminium only around the manhol                        | Aluminium full tank length and around the manholes                                      | Aluminium only around the manhol                        | Aluminium full tank length and around the manholes            | Aluminium full tank length and around the manholes                 |                          |
| HOSE CARRIERS                        | On both sides, 7 meter DN150 Aluminium with spill tray  | On both sides, 6 meter DN150 PVC                                     | On both sides, 6 meter DN150 PVC                                       | On both sides, 6 meter DN150 PVC                                       | On both sides, 7,5m DN150 Aluminium                     | Not-Included  | 6 m open type aluminium                                 | Not-Included  | On both sides, 6 meter DN150 stainless-steel                       |                          |
| FILLING MANHOLE NUMBER AND DIAMETER  | 5 x DN250   | 4 x DN500  | 1 x DN500  | 1 x DN500  | 1 x DN460   | 5 x DN460   | 1 x DN500   | 3 x DN500   | 3 x DN500  |                          |
| CLEANING MANHOLE NUMBER AND DIAMETER | -   | -  | 3 x DN300  | 4 x DN300  | -   | -   | -   | -   | -  |                          |
| OVERFILL PREVENTION                  | 5 pin optical sensor                                    | -  | -  | -  | -   | -   | -   | -   | -  |                          |
| SAFETY EQUIPMENT                     | Breather, Bottom Valve, Steam Adaptor                   | -  | -  | -  | -   | -   | -   | -   | -  |                          |
| BOTTOM VALVE                         | Pneumatic DN100   | Pneumatic DN80   | Pneumatic DN80   | Pneumatic DN80   | -   | 4" Stainless Steel Ball Valve   | 4" Steel Valve with Wheel Chark Control                 | 4" Stainless Steel Butterfly Valves                           | Pneumatic DN80   |                          |
| DISCHARGE LINE LOCATION              | At the left   | At the right   | At the rear right  | At the rear right  | At the rear   | At the rear   | At the rear   | At the rear   | At the rear inside the stainless steel electropolished armatur box |                          |
| DISCHARGE VALVE                      | -   | Butterfly DN80   | Butterfly DN80   | Butterfly DN80   | 3" ball valve, stainless steel                          | at right and left side 3" stainless steel ball valve                                    | 4" shutoff valve  | 4" Stainless steel butterfly Valve                            | 3"/ 4" Stainless steel butterfly Valve                             |                          |
| DISCHARGE LINE COUPLING              | API Couplings   | 3" Stainless steel TW coupling                                       | 3" Stainless steel TW coupling   | 3" Stainless steel TW coupling   | 3" Stainless steel TW coupling                          | 3" Stainless steel camlock coupling   | 3" Brass TW coupling                                    | 4" Rosista Coupling   | 3" Rosista Coupling  |                          |
| BOTTOM VALVE INSULATION BOX          | -   | Included   | Included   | Included   | -   | -   | Included  | Included  | Included   |                          |
| HEATING CHANNELS                     | -   | 4 Rows, suitable for water and steam                                 | 4 Rows, suitable for water and steam                                   | 3 Rows, suitable for water and steam                                   | -   | 2 Rows, suitable for water  | -   | -   | 3 Rows, suitable for water and steam                               |                          |
| HEATING SYSTEM                       | -   | Preperation  | Preperation  | Preperation  | -   | Preperation   | -   | -   | Preperation  |                          |
| SIDE AIRLINE                         | -   | 2" Stainless-steel electropolished                                   | 2" Stainless-steel electropolished                                     | 2" Stainless-steel electropolished                                     | -   | -   | 2" Aluminium electropolished                            | -   | 2" Stainless-steel electropolished                                 |                          |
| TOP AIRLINE                          | -   | 2" Stainless-steel electropolished                                   | 2" Stainless-steel electropolished                                     | 2" Stainless-steel electropolished                                     | -   | -   | 2" Aluminium electropolished                            | -   | 2" Stainless-steel electropolished                                 |                          |
| TOP AIRLINE VALVE                    | -   | Stainless-steel Butterfly valve                                      | Stainless-steel Butterfly valve  | Stainless-steel Butterfly valve  | -   | -   | 2 x Stainless-steel sleeve valve                        | -   | Stainless-steel Butterfly valve                                    |                          |
| CLEANING LINE                        | -   | -  | -  | -  | -   | -   | -   | Included Stainless steel DN50/25                              | Included Stainless steel DN50/25 as joint line with airline        |                          |
| CIP                                  | -   | -  | -  | -  | -   | -   | -   | With 5 cleaning balls   | With 8 cleaning balls  |                          |
| CHASSIS MATERIAL                     | Aluminium box type half-chassis                         | Stainless-steel Electropolished                                      | I type Stainless-steel Electropolished                                 | I type Stainless-steel Electropolished                                 | Aluminium box type                                      | Steel I type KTL coated   | Aluminium box type                                      | Steel I type KTL coated                                       | I type Stainless-steel Electropolished                             |                          |
| AXLE BRANDS                          | 3 x 9 Tons axles, BPW Airlight II with 22.5" discbrakes | 3 x 9 Tons axles, BPW Airlight II with 22.5" discbrakes              | 3 x 9 Tons axles, BPW Airlight II with Aluminium hub, 22.5" discbrakes | 3 x 9 Tons axles, BPW Airlight II with Aluminium hub, 22.5" discbrakes | 3 x 9 Tons axles, BPW Airlight II with 19.5" discbrakes | 3 x 9 Tons axles, BPW EAC with 22.5" discbrakes   | 3 x 9 Tons axles, BPW Airlight II with 22.5" discbrakes | 3 x 9 Tons axles, BPW EAC with 22.5" discbrakes               | 3 x 9 Tons axles, BPW Airlight II with 22.5" discbrakes            |                          |
| AXLE LIFTING                         | 1st axle lifting with ECAS control                      | 1st axle lifting with ECAS control                                   | 1st axle lifting with ECAS control                                     | 1st axle lifting with ECAS control                                     | 1st and 3rd axle lifting with ECAS control              | 1st axle lifting with ECAS control  | 1st axle lifting with ECAS control                      | 1st axle lifting with ECAS control                            | 1st axle lifting with ECAS control                                 |                          |
| MECHANICAL LANDING LEG               | 2 x 12 ton, steel JOST                                  | 2 x 12 ton, steel JOST   | 2 x 12 ton, Aluminium pinned drop-down                                 | 2 x 12 ton, Aluminium pinned drop-down                                 | 2 x 12 ton, steel JOST                                  | 2 x 12 ton, steel JOST  | 2 x 12 ton, steel JOST                                  | 2 x 12 ton, steel JOST  | 2 x 12 ton, Aluminium pinned drop-down                             |                          |
| ELECTRONIC SUSPENSION                | Knorr Bremse, EBS 2S/2M with RSS                        | Knorr Bremse, EBS 2S/2M with RSS                                     | Knorr Bremse, EBS 2S/2M with RSS                                       | Knorr Bremse, EBS 2S/2M with RSS                                       | Knorr Bremse, EBS 2S/2M with RSS                        | Knorr Bremse, EBS 2S/2M with RSS  | Knorr Bremse, EBS 2S/2M with RSS                        | Knorr Bremse, EBS 2S/2M with RSS                              | Knorr Bremse, EBS 2S/2M with RSS                                   |                          |
| ARMATUREN BOX                        | At the left, aluminium                                  | -  | -  | -  | -   | At the rear right and left side, stainless steel  | -   | At the rear, stainless steel                                  | At the rear, between the chassis beams, stainless steel            |                          |
| TOOL BOX                             | At the left, aluminium                                  | Polished stainless-steel 1.100 mm x 450 mm x 450 mm on the left side | Polished Stainless-steel 450 mm x 450 mm x 550 mm on the left side     | Polished Stainless-steel 450 mm x 450 mm x 550 mm on the left side     | 2 x Plastic tool box, 580 x 400 x 450                   | 1 x Plastic tool box, 1.000 x 600 x 500 and Steel KTL coated food box 1.200 x 600 x 500 | 1 x Plastic tool box, 400 x 480 x 600                   | -   | Stainless-steel 1.100 mm x 450 mm x 450 mm on the left side        |                          |

# STANDARD FEATURES



# OPTIONS





# WE KNOW YOUR KÄSSBOHRER **AND WE WANT TO TAKE CARE OF IT**

Kässbohrer develops vehicles that push the boundaries of innovation, and builds them to last. As our products are attuned to the needs of our customers worldwide, so are our services.

Taking care of your needs wherever your operations are in Europe, 95 % of our ever-growing competent after-sales service network is certified to serve the entire Kässbohrer product range. Kässbohrer's website is constantly updated with the latest information for your convenience.

With K-Advance Care Service packages tailored to each customer's operational needs, and with Europe's 4th largest after-sales network, 24 hour dispatch guarantee spare parts services from six centers as well as the 24/7 Kässbohrer Road Assistance hotline available in 41 countries and 12 languages, Kässbohrer after-sales services are attuned to meet the versatile requirements.





# KÄSSBOHRER

## PRODUCTION WORLDWIDE

Powered by its motto "Enginuity", Kässbohrer pushes the boundaries of vehicle engineering to meet the versatile needs of its customers worldwide. Winner of the prestigious Trailer Innovation Award six times and counting, Kässbohrer vehicles' long and useful product life is secured by the expertise of its production processes.

For now and in the future, Kässbohrer will continue developing products and services to take your business to the next level.



### Ulm Plant | Germany

In 2017, Kässbohrer returned back home by investing in a new production facility near Ulm. Operating on 35,000 m<sup>2</sup>, the Ulm plant serves as the main production facility for southern Germany and the neighboring countries. Fully offering and servicing Kässbohrer's incomparable product range as main sales and after-sales center, Ulm plant also serves as a spare parts warehouse.



### Goch Plant | Germany

Since 2002, Goch factory, operating on a total area of 108,000 m<sup>2</sup> is one of two production facilities in Germany. Serving as the main production, PDI and sales center for Northern Europe, the Goch facility also serves as main after-sales center for northern and western Germany and the Benelux region, comprising a spare parts warehouse expanded in 2021.



### Adapazarı Plant | Türkiye

Adapazarı is Kässbohrer's biggest production plant with a total production area of 383,000 m<sup>2</sup> and has a total production capacity of 20,000 units. With rooftop solar power plant investment completed in 2023, providing 92 % of the plant's electricity needs from the sun, manufacturing in Adapazarı emits 46 % less CO<sub>2</sub> (ISO 14064-1 and 14064-2 certified).

### Kässbohrer Sales GmbH

**Ulm** | Im Katzelwinkel 5, 88480 Achstetten, Germany | **T** +49 (0) 7392 96797-0 | **F** +49 (0) 7392 96797-67

**Goch** | Siemensstrasse 74, 47574 Germany | **T** +49 (0) 2823 9721-0 | **F** +49 (0) 2823 9721-21 | **E** info@kaessbohrer.com | [www.kaessbohrer.com](http://www.kaessbohrer.com)

Kässbohrer semi-trailers are manufactured according to lean production and quality principles in consideration of total cost of ownership. Kässbohrer reserves the right to alter the product specification. Visual and technical data subject to change according to vehicle configuration. v5 Sep 2024