

# Kässbohrer

CONSTRUCTION RANGE SPECIAL EDITION

2025

## SUSTAINABLE TRUST AMONG EUROPE'S TOP 2 CHOICE 4 YEARS AND COUNTING

Kässbohrer patented the very first 12 ton low-bed in 1931, since then Kässbohrer low-beds have evolved to the efficient reliable and long life vehicles meeting the exact needs of heavy transport industry. Proudly manufacturing for more than 70 countries, Kässbohrer has been among the top two leading choice of all European heavy haulage companies since 2021. With its engineering excellence, customer centric ingenuity and unparalleled manufacturing capability and expertise, Kässbohrer will continue to meet the need and excel the highest expectations of its customers taking their business to the next level.



## CONSTANTLY DEVELOPING THE PIONEERING HEAVY HAULAGE VEHICLES

**Reliable. Adaptive. Proven to perform beyond limits.**

Driven by the vision to become Europe's most preferred sustainable semi-trailer manufacturer for the next 125 years, Kässbohrer embraces innovation to make the impossible possible for its customers and to elevate the established through ingenuity and imagination—inspiring all stakeholders along the way.

Celebrated as a 7-time International Innovation Award winner across five consecutive terms, Kässbohrer has a proud legacy of breakthrough engineering. This tradition began with the world's first 12-ton capacity low-bed trailer in 1931 and the first 40-ton version in 1938—milestones that laid the foundation for today's state-of-the-art transport solutions.

Our current range of low-bed and low-loader trailers reflects this heritage of innovation, delivering unmatched flexibility, durability, and efficiency. With configurations offering up to six axles, fixed or extendable chassis, self-steering or hydraulic axles, and both standard and jumbo platform heights, Kässbohrer trailers are engineered to handle the most complex loads. Additional options—such as wheel recesses, hydraulic gooseneck ramps, and over 40 ramp types—allow operators to tailor each vehicle to the demands of their unique transport tasks.

What sets Kässbohrer apart is our unwavering commitment to engineering excellence and operational longevity. Every vehicle undergoes a rigorous validation process, including virtual simulations, lab testing, and 1,000,000 km of rough road endurance trials to ensure peak performance under real-world conditions.



Backed by a passionate, multidisciplinary team and a robust, integrated R&D and manufacturing network, Kässbohrer continues to elevate heavy transport—offering not only reliability and efficiency, but a partner you can depend on to move your business forward.



# KÄSSBOHRER FIXED LOW-BED SERIES

## PERFECT FIT FOR HEAVY WORKMACHINE TRANSPORT



13.4 TON CAPACITY  
FORGED LASHING RINGS



1<sup>ST</sup> AXLE LIFTING

Expertly engineered in detail for efficient transport of work machines, Kässbohrer K.SLS Fixed Low-Bed Series sets a new benchmark in heavy transport, delivering robust performance and operational flexibility.

With an impressively low tare weight starting from 7,800 kg, the K.SLS Series minimizes operational costs while maintaining high payload efficiency.

Presented with over 40 ramp type options with up to 60ton capacity, the series is further enhanced by advanced safety features, including up to 32 lashing rings, each with a capacity of 6, 8, 10, 13.4 tons, as well as container locks and lateral and vertical pillar pockets—offering comprehensive results for secure and fast transport of heavy goods.

The series also includes options like the hydraulic gooseneck ramp, providing unmatched versatility and adaptability for challenging transport needs for loads like forklifts and telehandlers.

# KÄSSBOHRER EXTENDABLE LOW-BED SERIES

## ENGINEERED FOR VERSATILITY BUILT FOR HEAVY TRANSPORT EXCELLENCE



WITHIN LEGAL LIMITS FOR HIGHER  
LOADS, THANK TO WIDE AND DEEP  
EXCAVATOR ARM RECESS



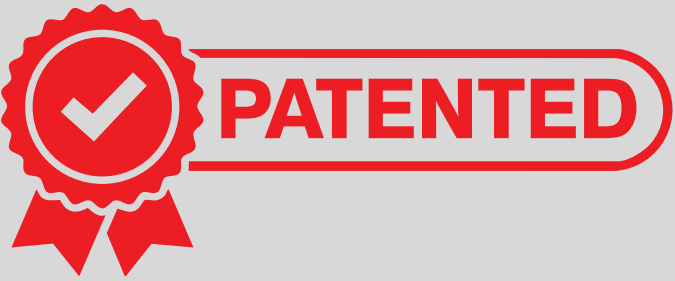
INCREASING LOAD FACTOR  
STEEL REINFORCED HARDWOOD  
DRIVE-ON WHEEL RECESS COVERS

Designed in detail Kässbohrer K.SLA Extendable Low-Bed Series delivers superior performance in heavy transportation, facilitating unmatched operational flexibility and reliability offered as 3,4,5,6 axle vehicles.

Designed with an extendable chassis upto 6.200 mm with locking positions on each 500 mm and a 3-step side extension system, K.SLA series accommodates a diverse range of cargo dimensions and load requirements.

Ensures secure and efficient load handling and stability : up to 32 lashing rings with 6, 8, 10, or 13.4 tons capacity, integrated container locks and pillar pockets.

Additional customization options, over 40 ramp configurations, wheel recesses and excavator arm recesses, hydraulic gooseneck ramp, full or partial metallisation enable top performance for complex transport tasks.



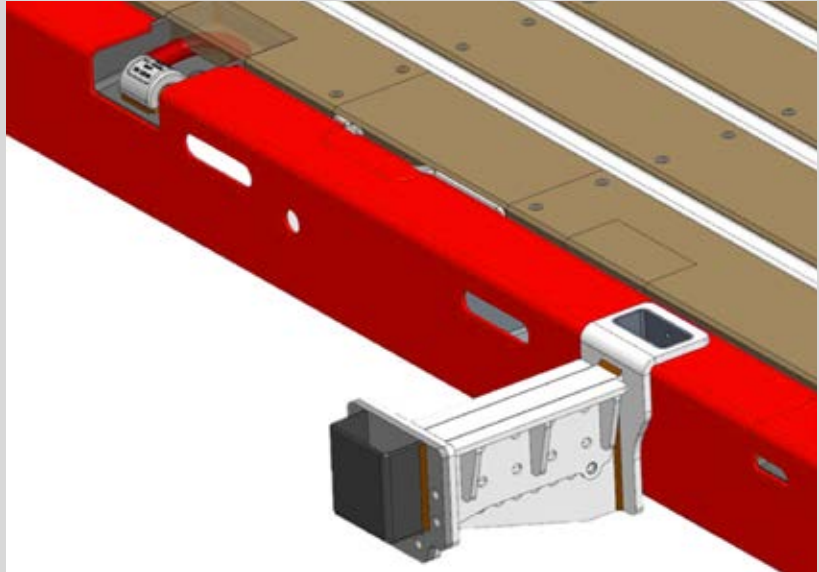
**Patented Enginuity Feature:**  
**LASHING RINGS ON VERTICAL PILLAR POCKET ROWS** is a feature located in the loading area of Low-bed and/or Platform vehicles and supports the stabilization of the load by allowing more lashing rings to place on the platform by smartly utilizing the vertical pillar pocket rows.



**Patented Enginuity Feature:**  
**MODULAR FLOORING** is a feature that enables users who work in different sectors or with different types of loads to conduct more operations with one vehicle. Thanks to the floor cover plates that can be mounted / dismounted with bolts, users can change the material of the base floor in accordance with the load, steel grid floor can be used for loads such as forklifts, hardwood floor can be used for loads such as palletized excavators and rubber floor can be used for tired machinery.



**Patented Enginuity Feature:**  
**MULTI-FUNCTIONAL EXTENSION BRACKET** is a modular feature that can meet many needs of users. This option, which can be mounted to the pillar pockets in such a way that it does not close the pockets itself, and also allows user to have more extending brackets, extended pillar pockets or lashing rings.



UP TO 600MM LOADING WIDTH  
10x2 UNITS OF LATERAL EXTENSION



# KÄSSBOHRER HYDRAULIC STREED LOW-BED SERIES

## THE STRONGEST LINK IN YOUR OPERATIONS



Precisely engineered for maximum manoeuvrability for heavy, ballast and oversized loads, featuring low tare weight and low platform height for maximum capacity and most various load security features for safest and most flexible handling, the K.SLH Hydraulic-Steered Low-Bed Series enables full control in transport of heavy oversized loads.

With a tare weight starting from 10,350 kg, the SLH Series strikes the ideal balance between robust construction and payload capacity, with technical axle load of up to 12 tons and technical gooseneck load up to 24 tons. Equipped

with ingeniously integrated air suspension systems, ensures optimal handling and performance.

Kässbohrer offers the SLH Series in both 3 or 4-axle configurations, available in up to 6.200 mm extendable and fixed chassis versions features precisely engineered strong and flat chassis with platform height of from 875 mm.

Designed for maximum safety, the SLH Series features up to 40 lashing rings, 18 pillar pockets on side raves, container locks, and up to 4x2 vertical pillar pocket rows, ensuring optimal load safety and securing options for abnormal cargo.



ENHANCED STEERING UP TO 42 DEGREE WITH INHOUSE DEVELOPED HYDRAULIC STEERING



CONTAINER LOCKS, PILLAR POCKETS, LASHING RINGS AND EXTENSION BRACKETS ENSURES SAFEST LOAD TRANSPORTATION



6.200 MM EXTENSION AND LOCKING POSITIONS ON EACH 500 MM



**PATENTED**

**Patented Ingenuity Feature:** **AUTOMATIC ALIGNMENT SYSTEM** is the system that controls the harmony between the tractor and semi-trailer for hydraulic steering trailers used in heavy load transport. The system uses angle sensors and a control unit to harmonize tractor and trailer after manual steering performed by the users by remote. The system senses the steering angle of the king-pin and axles and harmonized them with just a simple click on the remote controller.



INCREASED LIFESPAN & DECREASED SERVICE COST AUTOMATIC CENTRAL LUBRICATION UNIT

# KÄSSBOHRER LOW-LOADER SERIES

## UNMATCHED PERFORMANCE FOR HIGH AND HEAVY LOADS AND PRECISION HANDLING



4 UNITS OF EXTENDABLE WARNING PLATES WITH LED POSITIONING LAMPS AS STANDARD



PINNED OR WELDED POOL-REAR BOOGIE CONNECTION TO BE ABLE TO HAVE DESIRED LEVEL OF IMPACT ON LOAD DISTRUBITION

Engineered to meet the most demanding heavy and high goods transportation requirements, Kässbohrer's K.SLL Low-Loader Series combines innovative design with superior functionality. The series features low-loader trailers with 2 or 3 hydraulic steering axles and pneumatic suspension, ensuring smooth and precise operation even under most challenging conditions.

Presenting the lowest platform height, The K.SLL series enables the transport of cargo up to 3,700 mm without requiring additional permits or procedures, saving time and resources. The detachable gooseneck enhances safety and efficiency by simplifying the loading and unloading of wheeled machinery, ensuring a secure process even for the heaviest and highest equipment.

K.SLL series which are extendable up to 5,550 mm, accommodates heavy goods and maintains excellent stability. Equipped with advanced hydraulic axles, provides unmatched manoeuvrability for navigating narrow curves and challenging terrain, configured with robust construction and specialized chassis technology facilitates the safe and efficient transporation of heavy, high, and special loads.



3 PIECE DETACHABLE HARDOOD FEATURING 4 UNITS OF LASHING RINGS ON EACH

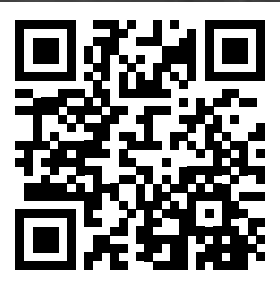


HYDRAULIC ADJUSTABLE GOOSENECK TO BETTER UTILIZE LOAD DISTRUBITION AND TO COUPLE WITH ANY TRUCK



# KÄSSBOHRER HEAVY-DUTY PLATFORM SERIES

## BUILT FOR MOST VERSATILE HEAVY LONG OVERSIZED LOADS



EXPERTLY DESIGNED LASHING RINGS, PILLARS, CONTAINER LOCKS FOR MAXIMUM MULTIFUNCTIONALITY



ROBUST BOX PROFILE CHASSIS CONSTRUCTION

Ingeniously designed, expertly built Heavy Duty Platform trailers are the best fit for most versatile heavy long oversized loads such as concrete blocks, bridge component and steel constructions. With their most robust construction, lighter weight, ideal load distribution, load securing and many options, Kässbohrer Heavy-Duty Platform series assure unbeatable performance in operations.

Presented as 3 or 4 axle vehicles, our Heavy-Duty Platform series offers both extendable and fixed chassis options, with a 5<sup>th</sup> wheel height range from 900 to 1,250 mm meeting the exact operational need.

Starting from 7.100 kg tare weight, ingeniously designed up to 3.500 or 6.900 mm extendable platform with locking positions in every 50 cm assures safe and precise handling.

Key options include 1st axle lifting, self-steering axles, and heavy-duty lashing rings up to 13.4 tons capacity.

Features full or partial metallization, wheel recesses, container locks, EUMOS certified vertical and horizontal pillar pockets, 22,5 t CodeXL certified front panel and omega profile supported hardwood floor.



Mr. Reinhard Hämmerle, General Manager of Hämmerle Spezialtransporte comments on the delivery of their new 3 axle extendable heavy-duty platform: "Kässbohrer provides its customers with the advantage of robust, lightweight, ease and speed in their operational work".



CODE XL CERTIFIED, UP TO 22.5 TONS RESILIENT STRONGEST IN EUROPE FRONT PANEL

# DESIGNED IN DETAIL FOR EFFICIENCY

## KÄSSBOHRER 3 AXLE STEEL TIPPER



Kässbohrer tipper semi-trailer, K.SKS, with 3 axles, stands for reliability and robustness under the hardest load and road conditions through its high strength chassis and upper structure.

- Fully compliant with the regulations of all European countries, K.SKS B is perfectly designed and engineered for construction transportation such as sandstone, asphalt, and earthworks.
- With the tare weight starting from 5.350 kg, K.SKS B provides operational efficiency during transportation.
- The robust chassis with cataphoretic dip-coating (KTL) process offers durability and persistence throughout the economic life of the vehicle.

- With king-pin capacity of 12.000 kg and unique upper structure design, K.SKS offers the maximum traction performance on the road and ideal load distribution for road safety.
- Through the new U-shape of the floor, K.SKS B prevents material residue and ensures fast unloading of bulk materials.
- 5 steps hydraulic cylinder with a lifting capacity of 250 bar enables operationally efficient unloading.
- Engineered to couple with 4 x 2, 6 x 2, 6 x 4 trucks offers maximum flexibility to the users.
- K.SKS is equipped with one-touch brake system, developed for stable unloading operations and with tilt alert system alerting the drivers on inclined lands, providing operational safety.





# MANUFACTURING EXCELLENCE

## METALLIZATION FOR LONGER LIFE



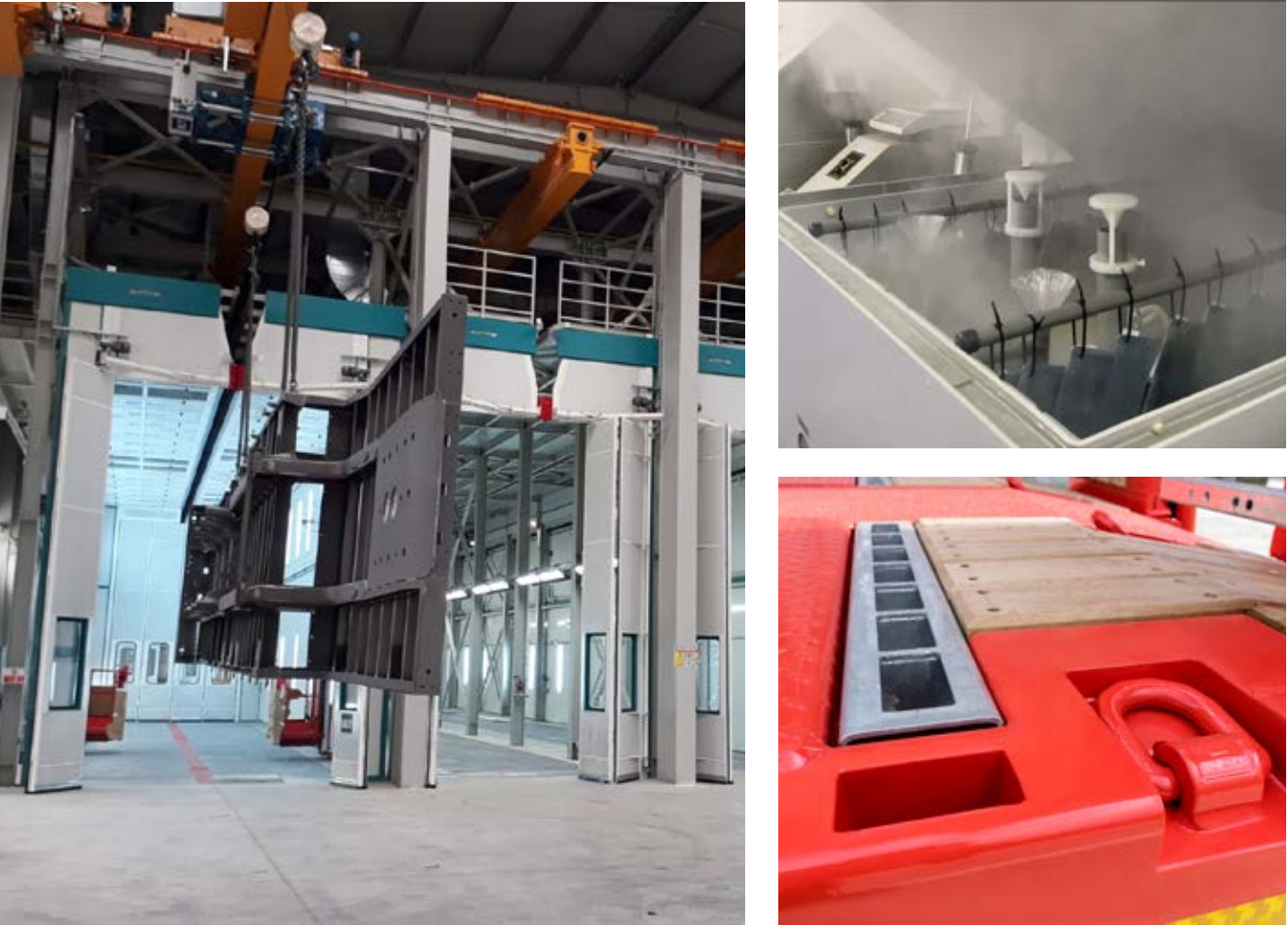
“ Low-beds are subject to adverse weather and road conditions that create the perfect environment for the degenerative corrosion and more importantly are relentlessly challenged under harsh loading and unloading operations, causing damages on their metal surface, paving the way for further corrosion.

Kässbohrer assures the top performance and longevity of its low-beds by metallization. The process starts with the chassis to first pass through automatic and manual blasting, where it is cleaned and the needed surface roughness for metal coating is achieved. The chassis is then sprayed with a metal alloy, consisting of 85% zinc (Zn) and 15% aluminum (Al), which gets integrated with the metal. The combination of 85/15 Zn/Al provides an acidity level of pH 0-14 to protect the metal surface against corrosion for over 20 years. The metallization is followed by two-coat painting.

Metallization protects the chassis against shocks, perforation, and scratches which would cause corrosion, increasing the durability of Kässbohrer semi-trailer, which in turn result in longer product life and increased value. ”

# 2500 HOURS AND COUNTING

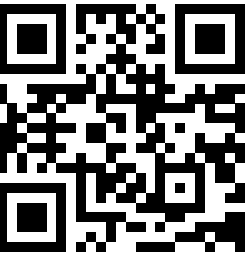
## CORROSION PROTECTION



Manufactured with automated surface blasting and metallization to highest quality, Kässbohrer low-beds undergo real time salt spray tests to determine when the red rusting will begin on intentionally damaged surfaces. Conducted at our R&D centers, the test now continue with no red rusting for over 2500 hours and counting longest rust free result in Europe.

Durable Surface Finishing: Automated surface blasting, metallization, and painting for long-lasting performance carried out integrated paint shop facilities.

WATCH VIDEO



# MANUFACTURING EXCELLENCE

## EUROPE'S LEADING LOW-BED FACTORY



Kässbohrer's state of the art low-bed factory is built on a total area of 60.000 m2 with annual capacity of 1.250 vehicles in single shift with flexibility to manufacture 2.500 low-bed vehicles in double shift making it the highest capacity low-bed facility in Europe. The factory operates according to Industry 4.0 principles with RFID latching crane systems, barcode positioning

technology, robot-assisted chassis welding, and painting, as well as automatic surface blasting and metallization, carried out in the integrated coating and paint shop facilities. It is powered by roof top solar power plant reducing its ISO 14064 scope 1&2 emissions by 46%.



# EUROPE'S LIGHTEST

## ADR TIPPING SILOS



Designed in detail and manufactured to the highest quality, Kässbohrer ADR tipping silos from 40m³ to 60 m³ are the lightest silo vehicles in Europe.

Built upon one piece aluminum extruded chassis, the tank body robotically and manually welded by TUV-DEKRA certified welders from Kässbohrer Academy for welding technologies.

Featuring precisely designed cone angles and smooth aluminum surfaces Kässbohrer tipping silos assure continuous flow of the material. With electropolished discharge cone and steel manifaolds are standard for efficiency.

**Efficient and long lasting Kässbohrer tipping and non tipping silos from 30m³ to 90 m³ takes your business to the next level and are proudly among top 3 choices of Europe for the past 5 consecutive years.**

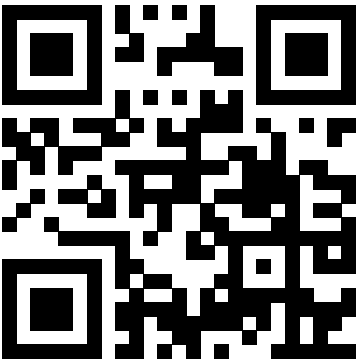


## AWARD WINNING BITUMEN TANKER

Kässbohrer sets new standards in safety and efficiency with its recognized innovations. . For dangerous goods transportation, it is essential to protect people's lives and health and to ward off risks to the environment as well as to public safety.

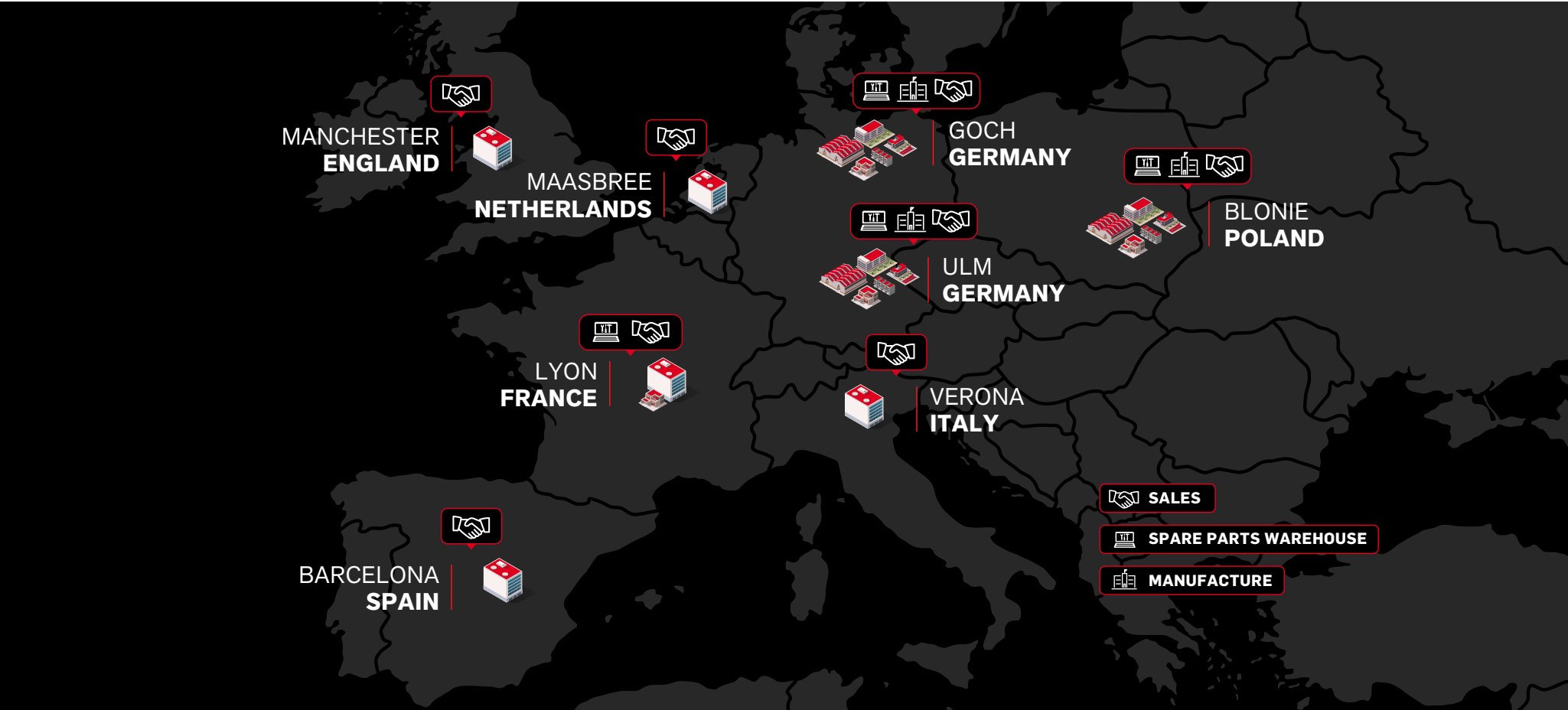
From bitumen to the transport of chemical goods - Kässbohrer is well equipped for these challenges and its efforts are acknowledged with an award: Kässbohrer is the winner of the Trailer Innovation first place category Safety with the Kässbohrer Safety Bitumen Tanker, K.STS 32.

WATCH VIDEO



# TOGETHER TO THE NEXT 125 YEARS

## 4 PRODUCTION FACILITIES | 9 HEAD OFFICES



# TOGETHER TO THE NEXT 125 YEARS

## SUSTAINABILITY OF MANUFACTURING



**Adapazarı Plant | Türkiye**

Adapazarı is Kässbohrer's biggest production plant with a total production area of 383,000 m² and has a total production capacity of 20,000 units. With rooftop solar power plant investment completed in 2023, providing 92 % of the plant's electricity needs from the sun, manufacturing in Adapazarı emits 46 % less CO<sub>2</sub> (ISO 14064-1 and 14064-2 certified)



**Ulm Plant | Germany**

In 2017, Kässbohrer returned back home by investing in a new production facility near Ulm. Operating on 35,000 m², the Ulm plant serves as the main production facility for southern Germany and the neighboring countries. Fully offering and servicing Kässbohrer's incomparable product range as main sales and after-sales center, Ulm plant also serves as a spare parts warehouse.



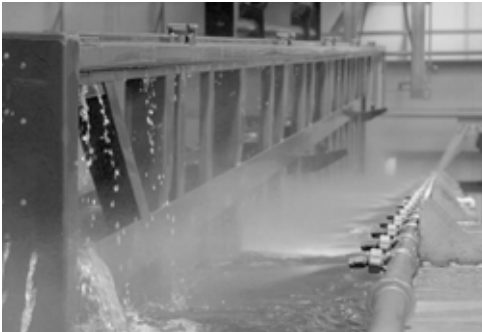
**Goch Plant | Germany**

Since 2002, Goch factory, operating on a total area of 108,000 m² is one of two production facilities in Germany. Serving as the main production, PDI and sales center for Northern Europe, the Goch facility also serves as main after-sales center for northern and western Germany and the Benelux region, comprising a spare parts warehouse expanded in 2021



**K-Polska Blonie**

Blonie/ Poland started its operations in 2022, serving as the sales, after sales and training center for Poland. Since 2024 assembly, PDI and special homologation services performed on site. The customer focused and excellence committed K-Polska team makes 4 deliveries per day with full customer satisfaction.





# EUROPE'S TOP CAPABILITY TEST AND VALIDATION INFRASTRUCTURE



## THE NEW OUT DOOR TEST TRACK

Located in Adapazarı Mega Campus, Kässbohrer has integrated a new outdoor test track to its R&D infrastucure. Realized with leading R&D and test center IDIADA, the new track begun is operational as of 2025.

Consisting of especially designed 10 standard and 2 customizable test tracks, Kässbohrer vehicles complete their final test rounds to assure long vehicle life and top performance with structural integrity goals of 1.000.000 km real life usage. Vehicles are tested in their entirety with special focus on components for torsion, vibration and stability under very thoughest road conditions.

The new test track is a solid addition to the inhouse R&D infrastructure serving Kässbohrer and facilitates efficiency in R&D processes.

WATCH VIDEO



## TOTAL 22.000 M<sup>2</sup> INDOOR TESTING AREA



Kässbohrer is served by two indoor R&D centers opened respectively in 2009 and 2023. The centers span an area of 22.000m2 indoor space with Europe's top capacity and versatality testing infrastructure with durability test benches that can accommodate multiple vehicles and components at the same time. The standard durability test is run for 1,000,000 km equal to 10 years product life. The center has advanced climatic, mechanical and chemical test laboratories. With 150 competent engineers Kässbohrer constantly advances trailer technology to take its customers' business to the next level.

