



K.SRI F FLOWER PRECISION & TOP CLASS INSULATION BY KÄSSBOHRER

The new flower carrier reefer K.SRI F is precisely designed for delicate flower transport. Offered with the inner height of 2.700 mm, and the internal width of 2.500 mm, K.SRI F provide optimum loading volume while providing top class insulation to keep all kinds of goods fresh. Equipped with flaps on front and rear panel to provide ventilation in the box to keeping flowers more fresh during operations. Kässbohrer new generation reefer presents top of the class insulation with K-value of $0.31 \text{ W/m}^2\text{K}$, presents low TCO, upto 9300 eur savings over 5 years* compared to metal covered side panels.

New generation reefer is equipped with state of the art air circulation system, standard air circulation wall, ventilation cover and ventilation double tube for equal airflow along the whole box. To meet the needs of delicate flower transport K. SRI F is Equipped with flaps on front and rear panel to provide ventilation in the box to keeping flowers more fresh during operations.

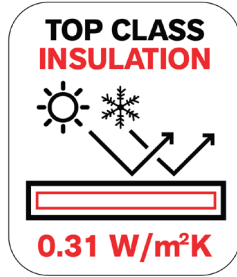




ENHANCED FEATURES

TOP CLASS INSULATION WITH K-VALUE OF 0.31 W/M²K

Box panels are constructed with the GRP (Glass Reinforced Polyester) polyurethane panel technology to providing top class insulation



TCO SAVE UP TO 9300€ IN 5 YEARS*

With top class insulation significantly reduce the running time of your refrigeration unit, saving up to 9300 € fuel saving in 5 years compared to metal covered side panels.* (Fuel price 1.80 eur per litre as of march 2024)

FLOOR 7.2 TON FORKLIFT CAPACITY

The floor with 7.2 ton capacity for forklift axle load is covered with anti-slip waterproof aluminum and panel-floor integrated kick plates for further robustness.



CHASSIS ACCLAIMED ROBUSTNESS

KTL Coated gooseneck chassis with one-piece king pin structure provides excellent durability without losing any internal height.



BOX STRUCTURAL UNIFORMITY FOR ENDURANCE

Precisely engineered structural uniformity with the robust chassis's width, maximized adhesion surface in all side panel connections, single piece rear frame.



TESTS VERIFIED FOR LONG PRODUCT LIFE

Dynamic off-road tests, equivalent to 1.000.000 km, guaranteeing structural integrity for long lifetime.



BUMPER AND REAR FRAME PROTECTED

Complete protection while back docking with vertical rubbers and cylindrical roller galvanized stainless steel ramp buffers.



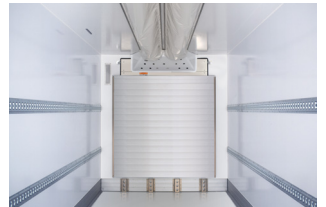
VENTILATION TUNNEL SYSTEM EQUAL AIRFLOW ALONG THE WHOLE BOX

Standard air circulation wall, ventilation cover and ventilation double tube tunnels evenly cools every area within the vehicle in single deck, double deck, multi temperature for fresh and frozen goods.



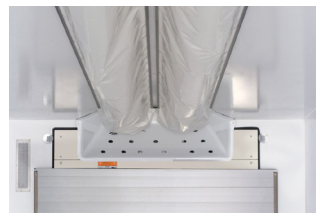
AIR CIRCULATION WALL MULTI-PURPOSE

Ensures precise airflow and superior cooling unit protection against impact while preventing frosting of goods close to cooling unit.



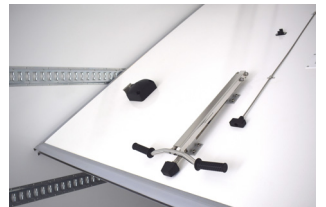
VENTILATION COVER VERSATILE

Ventilation cover is compatible with all premium cooler units.



SEPERATION WALL MULTI-TEMPERATURE TRANSPORT

Easy to use partition wall that provides multi-temperature transport.



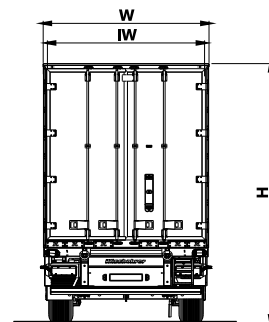
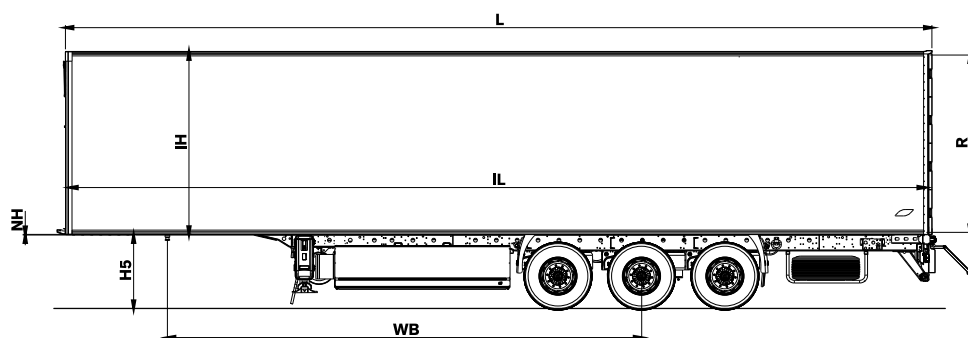
LOAD SECURE RAILS MAXIMUM WIDTH LOAD SECURING

Recessed load securing rails provide flexible load securing, maximum internal width and prevention of panel damage during your operations.



K.SRI F / 10 - 12 / 27

SPECIFICATIONS



TECHNICAL INFORMATION

Chassis	Made of high quality and high strength S700 MC steel, in compliance with Standard ISO 1726. Made of two welded longitudinal beams in I form with cross beams at needed distances.
Brake System	Dual-circuit electro-pneumatic Wabco brand EBS 2S/2M braking system with anti-lock (ABS) and tilt control system (RSS) in compliance with UN ECE R13 regulation.
Tyre Size	385/65 R22.5
Axles	BPW brand disc brakes axle with pneumatic suspension system.
Electric System	Aspöck Europoint 3 bulb type rear lamps. Outdoor lighting consists of 24V: 4 pieces of LED position lamps mounted on the front wall; color white. 2 pieces of LED top lights mounted on the rear; color red. 4 pieces of LED marker lamps mounted per side wall; color orange, 2 pieces of bulb type license plate lighting.
Floor	The 135 mm thick floor which has 3 mm aluminum teardrop patterns complies with EN 283 norm and is resistant to 7.200 kg forklift axle load. Floor reinforced with special crosses for better insulation.
Upperstructure Type	Equipped with highly-insulated 45 mm thick glass reinforced polyester sandwich side panel technology and composite reinforcement parts in order to improve strength side panels as well as excellent insulation efficiency. 73 mm thick front panel is prepared for cooling unit montage. 250 mm height aluminium kick plate across the side panels and front panel internal surface. These kick plates are welded to the floor in order to improve box strength. 85 mm double-winged and GRP-covered doors with insulation and seals around the wings. 140 mm height aluminium kick strip fitted at the base of each rear door. Hinge protection rubber buffers fitted vertically full height of the rear frame. Extra GRP profiles are located in the rear pillars in order to improve the rear construction of the vehicle. 84 mm thick roof panel with 4 special built-in LED interior lights are included.

Enhanced Features

Wide Range of Options

Load security rails
 Telematics
 Load fixing round bars
 24 30 36 Pallet Capacity Pallet Box
 240 L Fuel Tank
 830 x 500 x 470 mm Tool Box
 Tail-lift
 Self-steering Axle
 Axle
 SBS Turtle door lock
 Spare wheel holder
 Rear entrance spare wheel holder
 Food Box
 Cooling Units
 Partition Wall: movable via two bars system on the roof to enable transportation with two different temperature zones
 1st only or 1st and 3rd axle lifting with driving assistance from trailer or cabinet

TECHNICAL DATA

Fifth Wheel Height (H5)	1.100 mm
Wheelbase (Wb)	7.450 mm
External Length (L)	13.600 mm
Internal Length (IL)	13.385 mm
Total Width (W)	2.600 mm
Internal Width (IW)	2.500 mm
Internal Height (IH)	2.700 mm
Overall Height	4.030
Tare Weight ±%3	7300 kg

TECHNICAL CAPACITIES

King Pin Capacity	12.000 kg
Axle Load	27.000 kg
Total Weight	39.000 kg

Kässbohrer semi-trailers are manufactured according to lean production and quality principles in consideration of total cost of ownership.

Kässbohrer reserves the right to alter the product specification. Visual and technical data subject to change according to vehicle configuration.

Kässbohrer Sales GmbH

Werk Ulm | Im Katzenwinkel 5, 88480 Achstetten, Deutschland | T +49 (0) 7392 96797-0 | F +49 (0) 7392 96797-67

Werk Goch | Siemensstraße 76, 47574 Deutschland | T +49 (0) 2823 9721-0 | F +49 (0) 2823 9721-21 | E info@kaessbohrer.com | www.kaessbohrer.com